

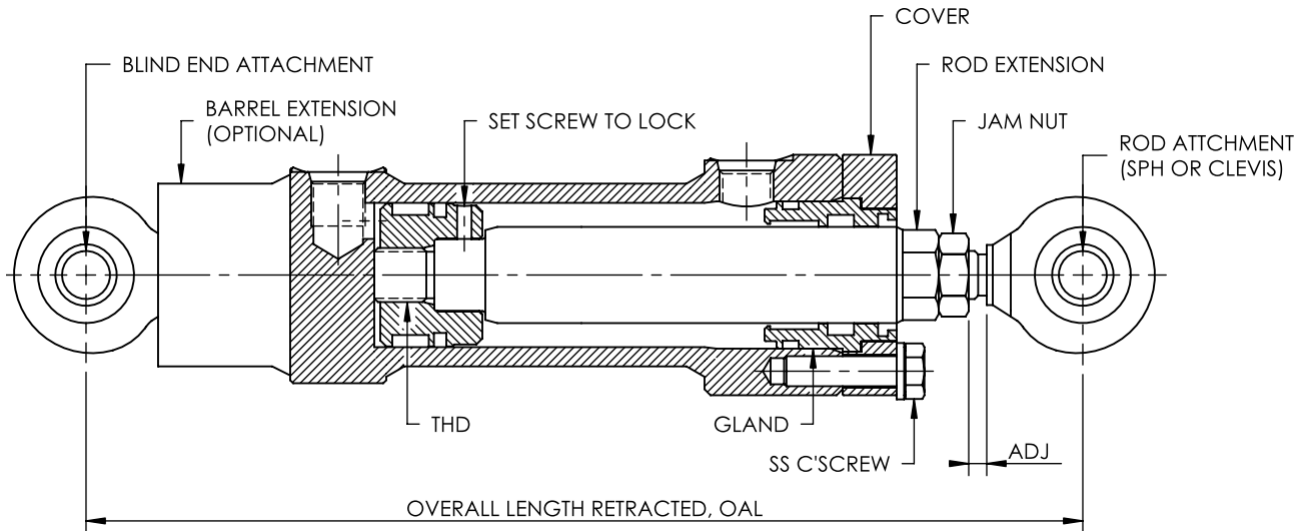


SERIES SS HYDRAULIC CYLINDER STAINLESS STEEL



PRESSURE:	2500 PSI WORKING 3000 PSI NON SHOCK
BORE SIZES:	1 1/2" TO 3 3/8"
ROD SIZES:	3/4" TO 2 1/2"
PORT:	SAE ORB
ATTACHMENTS:	SPHERICAL BEARINGS CLEVIS

The design of the Series SS cylinder is similar to our standard Series B



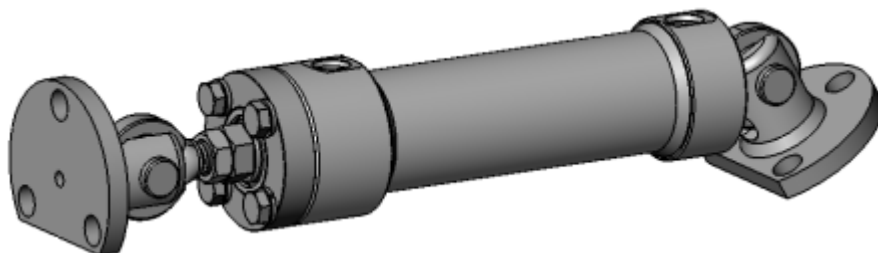
All cylinders are designed with standard pistons, heads, ends and rings. The barrel and rod are made to order to allow complete customization of stroke. Stop tubes, barrel extensions, and rod extensions can be used to adjust the OAL.

Cylinder model numbers are only created after an order is placed and are tracked using H drawing numbers. The H number refers to a specific customer design and are not shown in this catalogue.

Model #	e.g. SS29-20.8-09-H5028	DWG #
	<div style="display: flex; justify-content: space-around;"> SERIES SS ROD DIA X 10 </div>	
	<div style="display: flex; justify-content: space-around;"> BORE SIZE X 10 STROKE </div>	

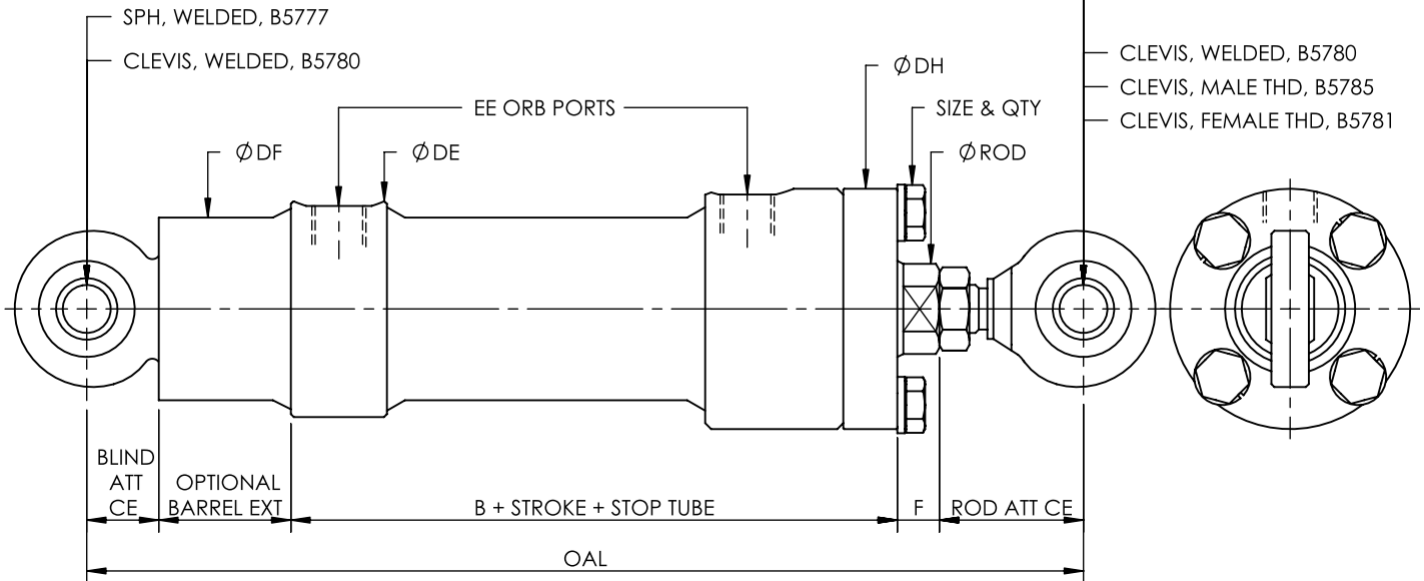
Key Points:

- Rod Material is Stainless Steel 17-4PH condition H1150, with 0.0005" to 0.001" hard chrome to provide a smooth and hardened surface for the rod seal and wiper.
- External components are made from 316L SS
- Cylinders are not painted
- Recommend spherical bushings both ends to reduce side loading from misalignment and decrease the likelihood of buckling. It is responsibility of the customer to select an appropriate rod size, stroke, stop tube, and load to avoid buckling.
- All ports are SAE O'Ring Boss and are machined directly into the end and ring. SS fittings should be used to adapt to other connections.
- SS mounting attachments are standard in three pin sizes 1/2", 3/4", and 1" and can be seen on the last page. These attachments are also available for use on the customer's equipment.
- Round body and no protrusion is ideal for anti corrosion.



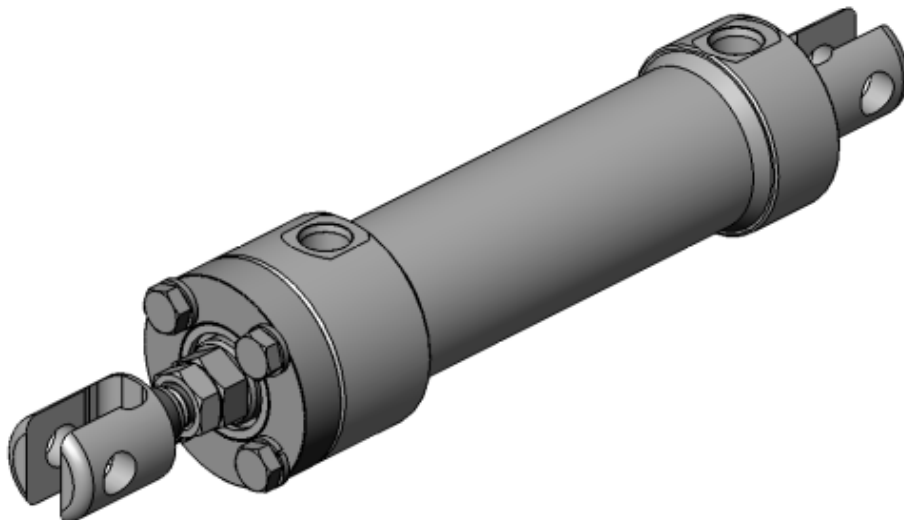
ROD END ATTACHMENT

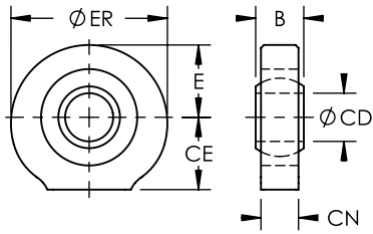
BARREL END ATTACHMENT



BORE INCHES	ROD ϕ INCHES	CD	B	DB	DE	OPTIONAL DF	DH	EE ORB	STD F
1.500	3/4, 1	0.50	3.88	1.88	2.25	1.90	2.50	#6	0.44
1.940	1, 1 3/8	0.50	3.88	2.38	2.75	2.38	3.00	#6	0.50
2.325	1, 1 3/8, 1 3/4	0.75	4.38	2.88	3.25	2.88	3.50	#8	0.50
2.900	1 3/8, 1 3/4, 2	1.00	4.50	3.50	3.75	3.50	4.25	#8	0.56
3.364	1 3/4, 2, 2 1/2	1.00	4.75	4.00	4.50	4.00	5.00	#8	0.69

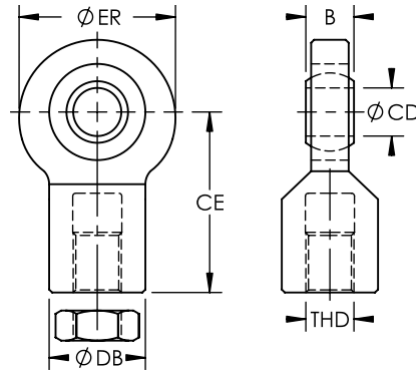
- Within reason, any size spherical & clevis can be attached to a cylinder.
- SEE NEXT PAGE FOR AVAILABLE ATTACHMENTS SPEC.
- Spherical bushing is maintenance free with PTFE Liner.





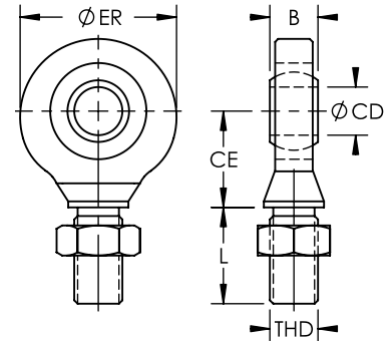
B5777—SPHERICAL, WELDED

DASH	CD	CE	CN	ER	B	E
-08	0.50	0.75	0.39	1.63	0.50	0.75
-12	0.75	1.13	0.59	2.25	0.75	1.00
-16	1.00	1.50	0.80	2.88	1.00	1.25



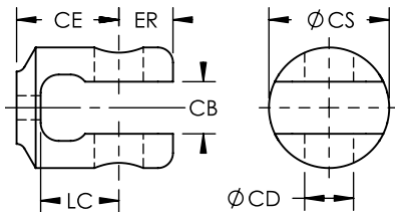
B5783—SPHERICAL, FEMALE THD

DASH	CD	THD	CE	ER	B	DB
-08	0.50	1/2-20	1.88	1.63	0.50	1.00
-12	0.75	3/4-16	2.50	2.25	0.75	1.38
-16	1.00	1 1/4-12	3.00	2.88	1.00	2.00



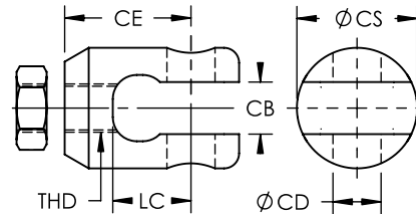
B5784—SPHERICAL, MALE THD

DASH	CD	THD	CE	ER	B	L
-08	0.50	1/2-20	1.00	1.63	0.50	1.38
-12	0.75	3/4-16	1.38	2.25	0.75	1.75
-16	1.00	1 1/4-12	1.88	2.88	1.00	2.13



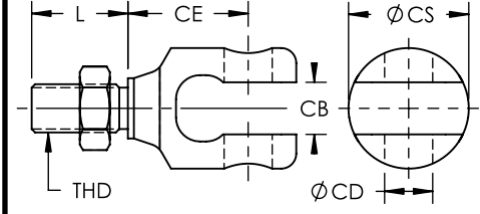
B5780—CLEVIS, WELDED

DASH	CD	CE	CB	CS	ER	LC
-08	0.50	1.06	0.54	1.25	0.56	0.81
-12	0.75	1.50	0.81	1.75	0.75	1.19
-16	1.00	1.75	1.06	2.50	1.25	1.44



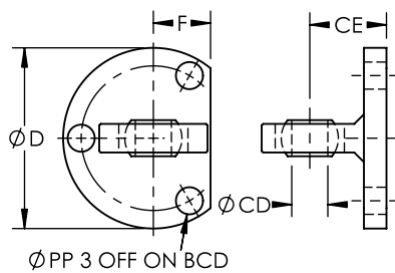
B5781—CLEVIS, FEMALE THD

DASH	CD	THD	CE	CB	CS	LC
-08	0.50	1/2-20	1.38	0.54	1.25	0.81
-12	0.75	3/4-16	2.13	0.81	1.75	1.19
-16	1.00	1 1/4-12	2.50	1.06	2.50	1.44



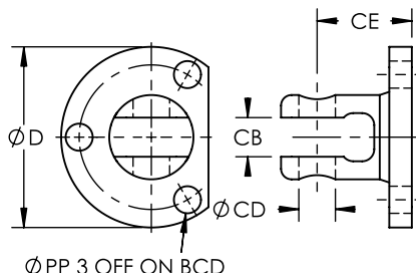
B5785—CLEVIS, MALE THD

DASH	CD	THD	CE	CB	CS	L
-08	0.50	1/2-20	1.31	0.54	1.25	1.38
-12	0.75	3/4-16	1.75	0.81	1.75	1.75
-16	1.00	1 1/4-12	2.13	1.06	2.50	2.13



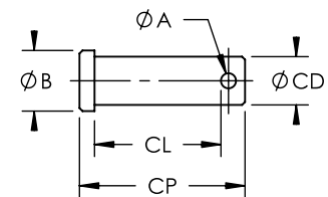
B5786—BRACKET, SPHERICAL

DASH	CD	CE	D	F	PP	BCD
-08	0.50	1.09	3.13	0.94	0.50	2.38
-12	0.75	1.59	3.75	1.19	0.56	3.00
-16	1.00	1.97	4.88	1.50	0.56	3.88



B5787—BRACKET, CLEVIS

DASH	CD	CE	CB	D	PP	BCD
-08	0.50	1.41	0.54	3.13	0.50	2.38
-12	0.75	1.97	0.81	3.75	0.56	3.00
-16	1.00	2.22	1.06	4.88	0.56	3.88



B5789—PIN C/W COTTER PIN

DASH	CD	CL	CP	A	B
-08	0.50	1.31	1.72	0.16	0.63
-12	0.75	1.81	2.31	0.16	0.94
-16	1.00	2.56	3.44	0.39	1.18