



Code 62 O'Ring Head Adapters

Split Flange Kit

Plug

ORB Reducer

Union

Socket Weld Pipe

Butt Weld Pipe

Male ORB

Female ORB

Male NPT

Female NPT

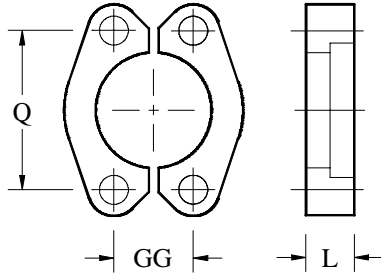
Male JIC

Male BSP

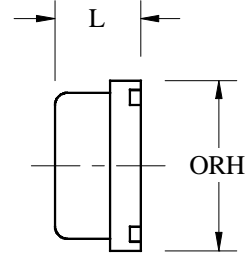
Pipe Stub



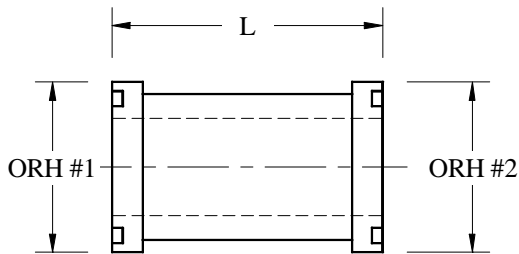
Code 62 O'Ring Head Adapters


Code 62 Split Flange Kit
Hex Head Mounting Kit Supplied

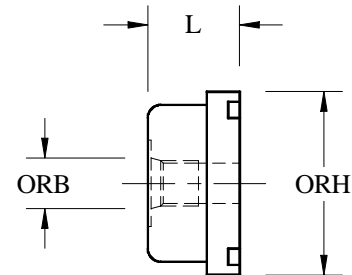
Part No.	Size	Q	GG	L
1825-08	1/2"	1.57	0.72	0.63
1825-12	3/4"	2.00	0.94	0.75
1825-16	1.00"	2.25	1.09	0.94
1825-20	1.25"	2.63	1.25	1.06
1825-24	1.50"	3.13	1.44	1.25
1825-32	2.00"	3.81	1.75	1.50


Code 62 O'Ring Head Plug

Part No.	ORH	L
1646-08	1/2"	0.69
1646-12	3/4"	0.81
1646-16	1.00"	0.94
1646-20	1.25"	1.13
1646-24	1.50"	1.31
1646-32	2.00"	1.63

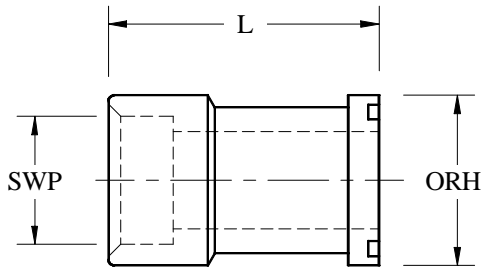

Code 62 O'Ring Head Union

Part No.	ORH #1	ORH #2	L
1959-16-16	1.00	1.00	3.56
1959-16-20	1.00	1.25	3.75
1959-20-20	1.25	1.25	3.81
1959-20-24	1.25	1.50	4.13
1959-24-24	1.50	1.50	4.69
1959-24-32	1.50	2.00	5.13
1959-32-32	2.00	2.00	5.69


ORB / Code 62 O'Ring Head Plug

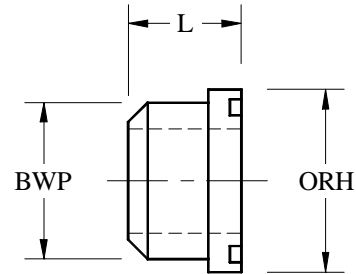
Part No.	ORB	ORH	L
2733-06-20	#6 (9/16"-18)	1.25"	1.13
2733-06-24	#6 (9/16"-18)	1.50"	1.31
2733-12-24	#12 (1-1/16"-12)	1.50"	1.31
2733-06-32	#6 (9/16"-18)	2.00"	1.63
2733-12-32	#12 (1-1/16"-12)	2.00"	1.63
2733-16-32	#16 (1-5/16"-12)	2.00"	1.63

Code 62 O'Ring Head Adapters



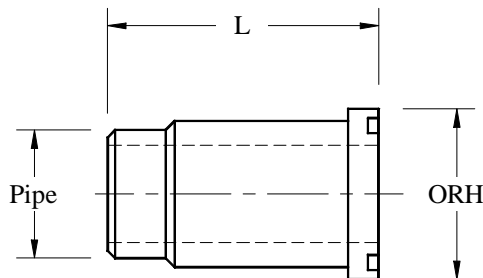
Socket Weld Pipe / Code 62 O'Ring Head

Part No.	SWP	ORH	L
1442-12-12	3/4" (1.055)	1/2"	1.94
1442-12-16	3/4" (1.055)	3/4"	1.88
1442-16-16	1.00" (1.320)	1.00"	2.13
1442-16-20	1.00" (1.320)	1.25"	2.13
1442-20-20	1.25" (1.670)	1.25"	2.50
1442-20-24	1.25" (1.670)	1.50"	2.50
1442-24-24	1.50" (1.910)	1.50"	3.00
1442-24-32	1.50" (1.910)	2.00"	3.00
1442-32-32	2.00" (2.385)	2.00"	3.50



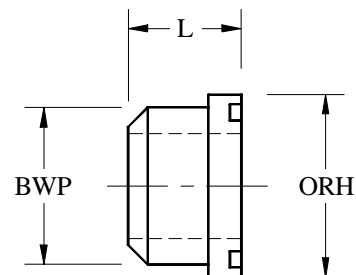
Sch 80 Butt Weld Pipe / Code 62 O'Ring Head

Part No.	Sch 80 BWP	ORH	L
1982-16-16	1.00	1.00	1.50
1982-20-16	1.25	1.00	2.00
1982-16-20	1.00	1.25	1.68
1982-20-20	1.25	1.25	1.68
1982-24-20	1.50	1.25	2.25
1982-20-24	1.25	1.50	2.00
1982-24-24	1.50	1.50	2.00
1982-32-24	2.00	1.50	3.00
1982-24-32	1.50	2.00	2.38
1982-32-32	2.00	2.00	2.38



Pipe Stub / Code 62 O'Ring Head

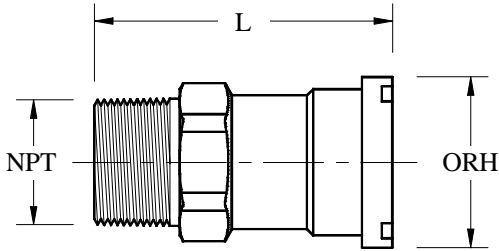
Part No.	Pipe	ORH	L
1882-12-12	3/4" (1.050)	3/4"	2.25
1882-16-16	1.00" (1.315)	1.00"	2.63
1882-20-20	1.25" (1.660)	1.25"	2.75
1882-24-24	1.50" (1.900)	1.50"	3.50
1882-32-32	2.00" (2.375)	2.00"	4.00



Sch 160 Butt Weld Pipe / Code 62 O'Ring Head

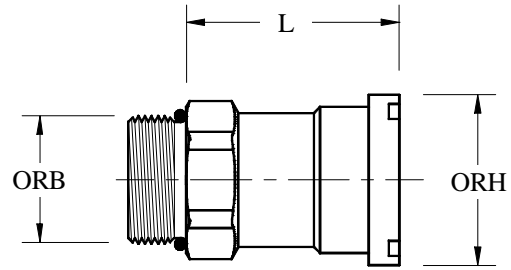
Part No.	Sch 160 BWP	ORH	L
1960-16-16	1.00	1.00	1.50
1960-20-20	1.25	1.25	1.69
1960-24-24	1.50	1.50	2.00
1960-32-32	2.00	2.00	2.38

Code 62 O'Ring Head Adapters



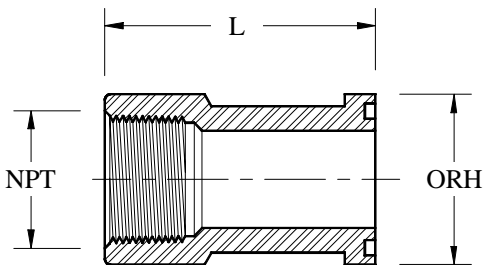
Male NPT / Code 62 O'Ring Head

Part No.	Male NPT	ORH	L
2021-12-12	3/4"-14	3/4"	2.56
2021-16-16	1.00"-11.5	1.00"	3.00
2021-20-20	1.25"-11.5	1.25"	3.25
2021-24-24	1.50"-11.5	1.50"	3.31
2021-32-32	2.00"-11.5	2.00"	4.38



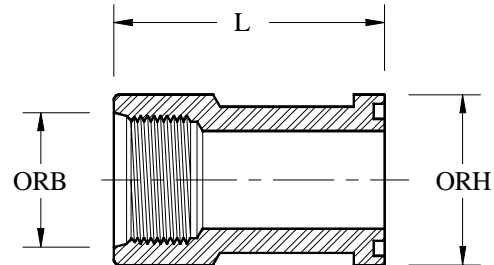
Male ORB / Code 62 O'Ring Head

Part No.	Male ORB	ORH	L
2020-12-12	#12 (1-1/16"-12)	3/4"	2.25
2020-12-16	#12 (1-1/16"-12)	1.00"	2.63
2020-16-16	#16 (1-5/16"-12)	1.00"	2.63
2020-20-16	#20 (1-5/8"-12)	1.00"	2.63
2020-16-20	#16 (1-5/16"-12)	1.25"	2.94
2020-20-20	#20 (1-5/8"-12)	1.25"	2.94
2020-24-20	#24 (1-7/8"-12)	1.25"	2.94
2020-20-24	#20 (1-5/8"-12)	1.50"	2.75
2020-24-24	#24 (1-7/8"-12)	1.50"	2.75
2020-32-24	#32 (2-1/2"-12)	1.50"	2.75
2020-24-32	#24 (1-7/8"-12)	2.00"	3.38
2020-32-32	#32 (2-1/2"-12)	2.00"	3.38



Female NPT / Code 62 O'Ring Head

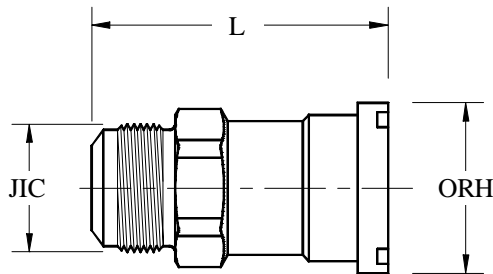
Part No.	Female NPT	ORH	L
1884-12-12	3/4"-14	3/4"	2.25
1884-12-16	3/4"-14	1.00"	2.00
1884-16-16	1.00"-11.5	1.00"	2.50
1884-16-20	1.00"-11.5	1.25"	2.38
1884-20-20	1.25"-11.5	1.25"	2.75
1884-20-24	1.25"-11.5	1.50"	2.75
1884-24-24	1.50"-11.5	1.50"	3.13
1884-24-32	1.50"-11.5	2.00"	3.25
1884-32-32	2.00"-11.5	2.00"	3.63



Female ORB / Code 62 O'Ring Head

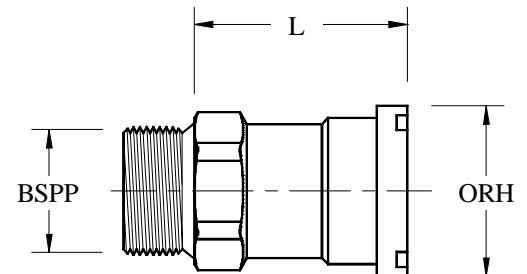
Part No.	Female ORB	ORH	L
1885-12-12	#12 (1-1/16"-12)	3/4"	2.25
1885-12-16	#12 (1-1/16"-12)	1.00"	2.00
1885-16-16	#16 (1-5/16"-12)	1.00"	2.50
1885-16-20	#16 (1-5/16"-12)	1.25"	2.38
1885-20-20	#20 (1-5/8"-12)	1.25"	2.75
1885-20-24	#20 (1-5/8"-12)	1.50"	2.75
1885-24-24	#24 (1-7/8"-12)	1.50"	3.13
1885-24-32	#24 (1-7/8"-12)	2.00"	3.25
1885-32-32	#32 (2-1/2"-12)	2.00"	3.63

Code 62 O'Ring Head Adapters



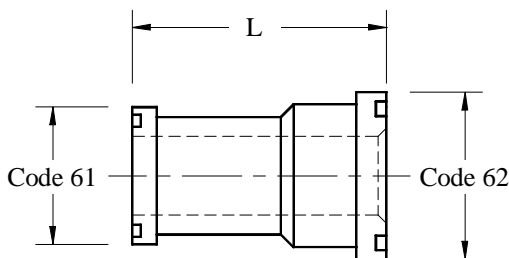
Male JIC / Code 62 O'Ring Head

Part No.	Male JIC	ORH	L
1883-12-12	#12 (1-1/16"-12)	3/4"	3.13
1883-12-16	#12 (1-1/16"-12)	1.00"	3.44
1883-16-16	#16 (1-5/16"-12)	1.00"	3.56
1883-20-16	#20 (1-5/8"-12)	1.00"	3.56
1883-16-20	#16 (1-5/16"-12)	1.25"	3.81
1883-20-20	#20 (1-5/8"-12)	1.25"	3.88
1883-24-20	#24 (1-7/8"-12)	1.25"	4.03
1883-20-24	#20 (1-5/8"-12)	1.50"	3.75
1883-24-24	#24 (1-7/8"-12)	1.50"	3.81
1883-32-24	#32 (2-1/2"-12)	1.50"	3.81
1883-24-32	#24 (1-7/8"-12)	2.00"	4.44
1883-32-32	#32 (2-1/2"-12)	2.00"	4.44



Male BSPP / Code 62 O'Ring Head

Part No.	Male BSPP	ORH	L
2022-12-16	3/4"-14	1.00"	2.63
2022-16-16	1.00"-11	1.00"	2.63
2022-20-16	1.25"-11	1.00"	2.63
2022-16-20	1.00"-11	1.25"	3.00
2022-20-20	1.25"-11	1.25"	3.00
2022-24-20	1.50"-11	1.25"	3.00
2022-20-24	1.25"-11	1.50"	2.75
2022-24-24	1.50"-11	1.50"	2.75
2022-24-32	1.50"-11	2.00"	3.31



Code 61 / Code 62 O'Ring Head Union

Part No.	Code 61 ORH	Code 62 ORH	L
1955-16-16	1.00	1.00	3.13
1955-20-16	1.25	1.00	3.38
1955-16-20	1.00	1.25	3.25
1955-20-20	1.25	1.25	3.50
1955-24-20	1.50	1.25	3.56
1955-20-24	1.25	1.50	3.75
1955-24-24	1.50	1.50	3.88
1955-32-24	2.00	1.50	3.88
1955-24-32	1.50	2.00	4.25
1955-32-32	2.00	2.00	4.25
1955-40-32	2.50	2.00	4.50

