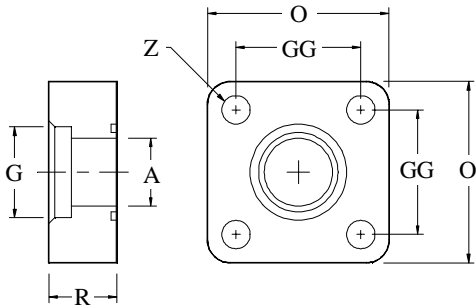
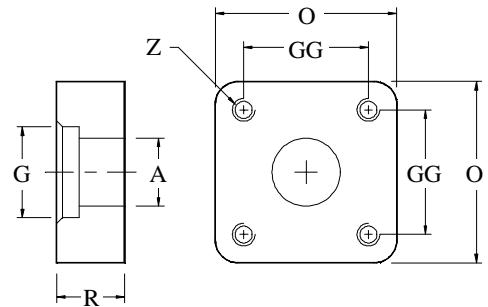


## ISO 6000 psi Flanges



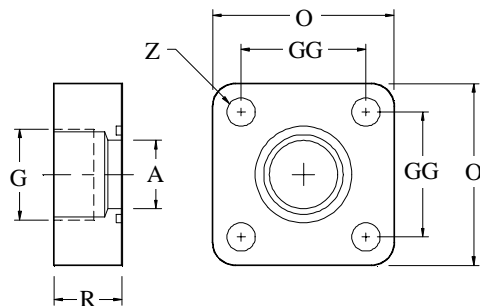
**Socket Weld Pipe (SWP) / O'Ring Face (ORF)**

Part No.	GG	O	A	G	R	Z
2183-32-32	2.728	4.00	1.63	2.385	1.75	0.69
2183-40-40	3.285	4.75	2.13	2.888	2.00	0.81
2183-48-48	4.037	5.75	2.75	3.515	2.00	1.06
2183-64-64	4.872	7.00	3.50	4.515	2.00	1.31



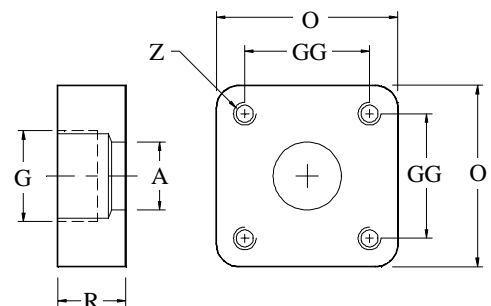
**Socket Weld Pipe (SWP) / Companion**

Part No.	GG	O	A	G	R	Z
2274-32-32	2.728	4.00	1.63	2.385	1.75	5/8-11
2274-40-40	3.285	4.75	2.13	2.888	2.00	3/4-10
2274-48-48	4.037	5.75	2.75	3.515	2.00	1-8
2274-64-64	4.872	7.00	3.50	4.515	2.00	1.25-7



**National Pipe Thread (NPT) / O'Ring Face (ORF)**

Part No.	GG	O	A	G	R	Z
2300-32-32	2.728	4.00	1.63	2 NPT	1.75	0.69
2300-40-40	3.285	4.75	2.13	2.5	2.00	0.81
2300-48-48	4.037	5.75	2.75	3 NPT	2.00	1.06
2300-64-64	4.872	7.00	3.50	4 NPT	2.00	1.31



**National Pipe Thread (NPT) / Companion**

Part No.	GG	O	A	G	R	Z
2299-32-32	2.728	4.00	1.63	2 NPT	1.75	5/8-11
2299-40-40	3.285	4.75	2.13	2.5	2.00	3/4-10
2299-48-48	4.037	5.75	2.75	3 NPT	2.00	1-8
2299-64-64	4.872	7.00	3.50	4 NPT	2.00	1.25-7