



Welded, Threaded & 4-Bolt Tees

O'Ring Boss

National Pipe Thread

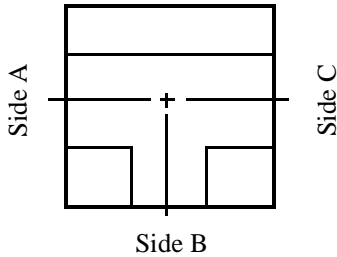
Socket Weld Pipe

Socket Weld Tube

4-Bolt Flange



Welded, Threaded & 4-Bolt Tees



All tees have three sides. Side A, B, & C
Side A & C are considered to be the 'RUN'
While Side B is considered to be the 'BRANCH'
Although most sizes shown are straight sizes,
Jump sizes are available upon request.

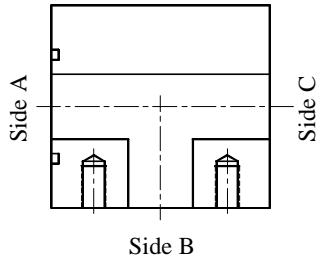
Contact our sales staff for sizes not shown in this catalog.
See page 46-24 for corner tees

Code 61 & 62 O'Ring Face Tees			
Side A	Side B	Side C	Page No.
ORF	Comp	Comp	46-3
		ORB	46-3
		NPT	46-3
		SWP	46-3
		SWT	46-4
	ORB	Comp	46-4
		ORB	46-4
		SWP	46-4
		SWT	46-5
		Comp	46-5
	NPT	NPT	46-5
		SWP	46-5
		SWT	46-6
		Comp	46-6
		ORB	46-6
	SWP	NPT	46-6
		SWP	46-7
		Comp	46-7
		ORB	46-7
		SWT	46-7
SWT	NPT	46-7	
	SWT	46-8	
	Comp	46-8	
	ORB	46-8	
	NPT	46-8	
Comp	ORF	NPT	46-8
		SWP	46-9
		SWT	46-9
		ORB	46-9
SWP	ORF	NPT	46-9
		SWP	46-10
SWT	ORF	ORB	46-10
		NPT	46-10
		SWT	46-10
ORB	ORF	ORB	46-11
NPT	ORF	NPT	46-11

Code 61 & 62 Companion Tees			
Side A	Side B	Face C	Page No.
Comp	Comp	Comp	46-11
		ORB	46-11
		NPT	46-12
		SWP	46-12
		SWT	46-12
	ORB	Comp	46-12
		ORB	46-13
		SWP	46-13
		SWT	46-13
		Comp	46-13
	NPT	NPT	46-14
		SWP	46-14
		SWT	46-14
		Comp	46-14
		ORB	46-15
	SWP	NPT	46-15
		SWP	46-15
		Comp	46-15
		ORB	46-16
		NPT	46-16
SWT	SWT	46-16	
	Comp	46-16	
	ORB	46-16	
	NPT	46-17	
	SWP	46-17	
SWP	Comp	ORB	46-17
		NPT	46-17
		SWP	46-17
		ORB	46-17
		NPT	46-17
SWT	Comp	ORB	46-18
		NPT	46-18
		ORB	46-18
		NPT	46-18
		Comp	46-18

Welded & Threaded Tees				
Side A	Side B	Side C	Page No.	
ORB	ORB	ORB	46-18	
	SWP	ORB	46-19	
	SWT	ORB	46-19	
NPT	NPT	NPT	46-19	
	SWP	NPT	46-19	
	SWT	NPT	46-20	
	ORB	ORB	46-20	
SWP	ORB	SWP	46-20	
		NPT	46-21	
	SWP	SWP	46-21	
		ORB	46-21	
		NPT	46-21	
SWT	ORB	SWP	46-22	
		SWT	46-22	
	NPT	NPT	46-22	
		SWT	46-23	
		ORB	46-23	
	SWT	SWT	NPT	46-23
			SWT	46-23

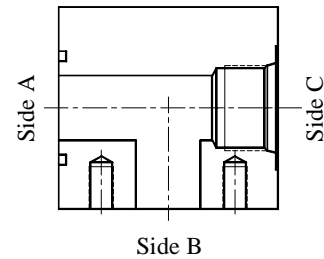
Code 61 & Code 62 4-Bolt Tees



ORF / Companion / Companion

Code 61 Part No.	Code 62 Part No.	Side A (ORF)	Side B (Comp)	Side C (Comp)
2415-08-08-08	2520-08-08-08	0.50	0.50	0.50
2415-12-12-12	2520-12-12-12	0.75	0.75	0.75
2415-16-16-16	2520-16-16-16	1.00	1.00	1.00
2415-20-20-20	2520-20-20-20	1.25	1.25	1.25
2415-24-24-24	2520-24-24-24	1.50	1.50	1.50
2415-32-32-32	2520-32-32-32	2.00	2.00	2.00

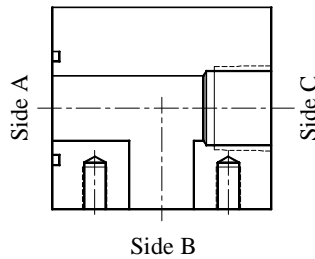
SANDWICH STYLE BLOCK, NO BOLTS SUPPLIED



ORF / Companion / ORB

Code 61 Part No.	Code 62 Part No.	Side A (ORF)	Side B (Comp)	Side C (ORB)
2418-08-08-08	2523-08-08-08	0.50	0.50	#8 (3/4"-16)
2418-12-12-12	2523-12-12-12	0.75	0.75	#12 (1-1/16"-12)
2418-16-16-16	2523-16-16-16	1.00	1.00	#16 (1-5/16"-12)
2418-20-20-20	2523-20-20-20	1.25	1.25	#20 (1-5/8"-12)
2418-24-24-24	2523-24-24-24	1.50	1.50	#24 (1-7/8"-12)
2418-32-32-32	2523-32-32-32	2.00	2.00	#32 (2-1/2"-12)

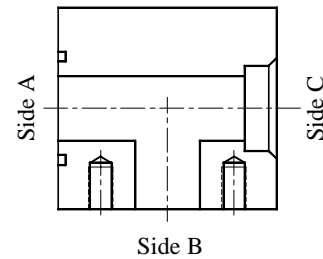
COMES COMPLETE WITH BOLT KIT



ORF / Companion / NPT

Code 61 Part No.	Code 62 Part No.	Side A (ORF)	Side B (Comp)	Side C (NPT)
2419-08-08-08	2524-08-08-08	0.50	0.50	1/2"-14
2419-12-12-12	2524-12-12-12	0.75	0.75	3/4"-14
2419-16-16-16	2524-16-16-16	1.00	1.00	1"-11.5
2419-20-20-20	2524-20-20-20	1.25	1.25	1-1/4"-11.5
2419-24-24-24	2524-24-24-24	1.50	1.50	1-1/2"-11.5
2419-32-32-32	2524-32-32-32	2.00	2.00	2"-11.5

COMES COMPLETE WITH BOLT KIT

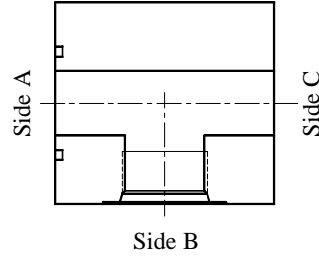
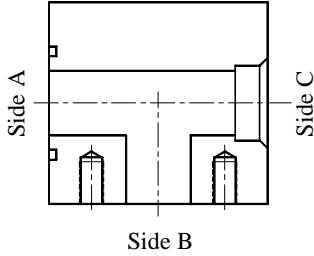


ORF / Companion / SWP

Code 61 Part No.	Code 62 Part No.	Side A (ORF)	Side B (Comp)	Side C (SWP)
2416-08-08-08	2521-08-08-08	0.50	0.50	1/2
2416-12-12-12	2521-12-12-12	0.75	0.75	3/4
2416-16-16-16	2521-16-16-16	1.00	1.00	1
2416-20-20-20	2521-20-20-20	1.25	1.25	1-1/4
2416-24-24-24	2521-24-24-24	1.50	1.50	1-1/2
2416-32-32-32	2521-32-32-32	2.00	2.00	2

COMES COMPLETE WITH BOLT KIT

Code 61 & Code 62 4-Bolt Tees



ORF / Companion / SWT

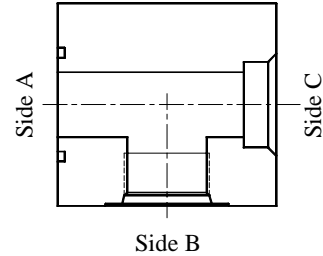
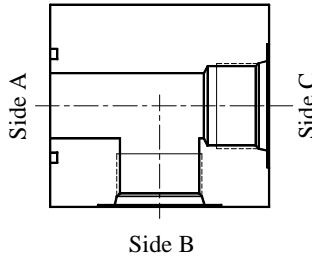
Code 61 Part No.	Code 62 Part No.	Side A (ORF)	Side B (Comp)	Side C (SWT)
2417-08-08-08	2522-08-08-08	0.50	0.50	0.50
2417-12-12-12	2522-12-12-12	0.75	0.75	0.75
2417-16-16-16	2522-16-16-16	1.00	1.00	1.00
2417-20-20-20	2522-20-20-20	1.25	1.25	1.25
2417-24-24-24	2522-24-24-24	1.50	1.50	1.50
2417-32-32-32	2522-32-32-32	2.00	2.00	2.00

COMES COMPLETE WITH BOLT KIT

ORF / ORB / Companion

Code 61 Part No.	Code 62 Part No.	Side A (ORF)	Side B (ORB)	Side C (Comp)
1870-08-08-08	1872-08-08-08	0.50	#8 (3/4"-16)	0.50
1870-12-12-12	1872-12-12-12	0.75	#12 (1-1/16"-12)	0.75
1870-16-16-16	1872-16-16-16	1.00	#16 (1-5/16"-12)	1.00
1870-20-20-20	1872-20-20-20	1.25	#20 (1-5/8"-12)	1.25
1870-24-24-24	1872-24-24-24	1.50	#24 (1-7/8"-12)	1.50
1870-32-32-32	1872-32-32-32	2.00	#32 (2-1/2"-12)	2.00

SANDWICH STYLE BLOCK, NO BOLTS SUPPLIED



ORF / ORB / ORB

Code 61 Part No.	Code 62 Part No.	Side A (ORF)	Side B (ORB)	Side C (ORB)
2431-08-08-08	2536-08-08-08	0.50	#8 (3/4"-16)	#8 (3/4"-16)
2431-12-12-12	2536-12-12-12	0.75	#12 (1-1/16"-12)	#12 (1-1/16"-12)
2431-16-16-16	2536-16-16-16	1.00	#16 (1-5/16"-12)	#16 (1-5/16"-12)
2431-20-20-20	2536-20-20-20	1.25	#20 (1-5/8"-12)	#20 (1-5/8"-12)
2431-24-24-24	2536-24-24-24	1.50	#24 (1-7/8"-12)	#24 (1-7/8"-12)
2431-32-32-32	2536-32-32-32	2.00	#32 (2-1/2"-12)	#32 (2-1/2"-12)

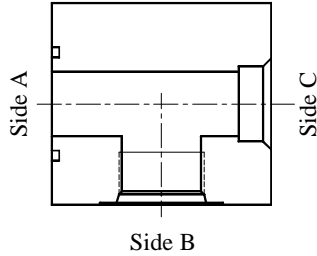
COMES COMPLETE WITH BOLT KIT

ORF / ORB / SWP

Code 61 Part No.	Code 62 Part No.	Side A (ORF)	Side B (ORB)	Side C (SWP)
2429-08-08-08	2534-08-08-08	0.50	#8 (3/4"-16)	1/2
2429-12-12-12	2534-12-12-12	0.75	#12 (1-1/16"-12)	3/4
2429-16-16-16	2534-16-16-16	1.00	#16 (1-5/16"-12)	1
2429-20-20-20	2534-20-20-20	1.25	#20 (1-5/8"-12)	1-1/4
2429-24-24-24	2534-24-24-24	1.50	#24 (1-7/8"-12)	1-1/2
2429-32-32-32	2534-32-32-32	2.00	#32 (2-1/2"-12)	2

COMES COMPLETE WITH BOLT KIT

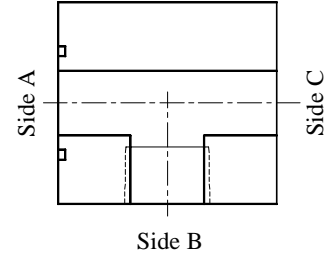
Code 61 & Code 62 4-Bolt Tees



ORF / ORB / SWT

Code 61 Part No.	Code 62 Part No.	Side A (ORF)	Side B (ORB)	Side C (SWT)
2430-08-08-08	2535-08-08-08	0.50	#8 (3/4"-16)	0.50
2430-12-12-16	2535-12-12-16	0.75	#12 (1-1/16"-12)	1.00
2430-16-16-20	2535-16-16-20	1.00	#16 (1-5/16"-12)	1.25
2430-20-20-24	2535-20-20-24	1.25	#20 (1-5/8"-12)	1.50
2430-24-24-32	2535-24-24-32	1.50	#24 (1-7/8"-12)	2.00
2430-32-32-32	2535-32-32-32	2.00	#32 (2-1/2"-12)	2.00

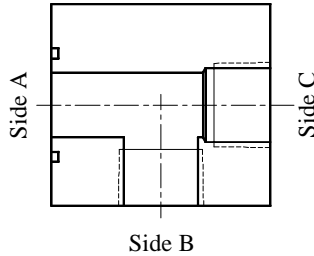
COMES COMPLETE WITH BOLT KIT



ORF / NPT / Companion

Code 61 Part No.	Code 62 Part No.	Side A (ORF)	Side B (NPT)	Side C (Comp)
2433-08-08-08	2538-08-08-08	0.50	1/2"-14	0.50
2433-12-12-12	2538-12-12-12	0.75	3/4"-14	0.75
2433-16-16-16	2538-16-16-16	1.00	1"-11.5	1.00
2433-20-20-20	2538-20-20-20	1.25	1-1/4"-11.5	1.25
2433-24-24-24	2538-24-24-24	1.50	1-1/2"-11.5	1.50
2433-32-32-32	2538-32-32-32	2.00	2"-11.5	2.00

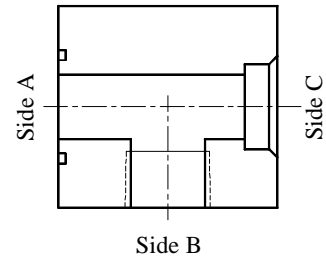
SANDWICH STYLE BLOCK, NO BOLTS SUPPLIED



ORF / NPT / NPT

Code 61 Part No.	Code 62 Part No.	Side A (ORF)	Side B (NPT)	Side C (NPT)
2437-08-08-08	2542-08-08-08	0.50	1/2"-14	1/2"-14
2437-12-12-12	2542-12-12-12	0.75	3/4"-14	3/4"-14
2437-16-16-16	2542-16-16-16	1.00	1"-11.5	1"-11.5
2437-20-20-20	2542-20-20-20	1.25	1-1/4"-11.5	1-1/4"-11.5
2437-24-24-24	2542-24-24-24	1.50	1-1/2"-11.5	1-1/2"-11.5
2437-32-32-32	2542-32-32-32	2.00	2"-11.5	2"-11.5

COMES COMPLETE WITH BOLT KIT

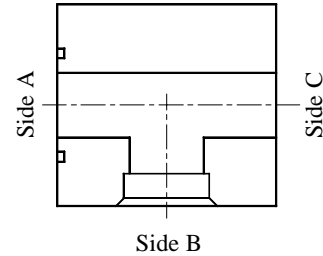
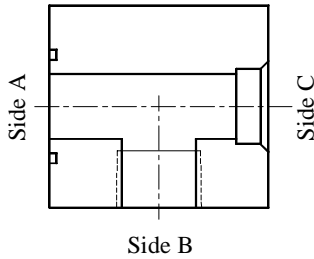


ORF / NPT / SWP

Code 61 Part No.	Code 62 Part No.	Side A (ORF)	Side B (NPT)	Side C (SWP)
2434-08-08-08	2539-08-08-08	0.50	1/2"-14	1/2
2434-12-12-12	2539-12-12-12	0.75	3/4"-14	3/4
2434-16-16-16	2539-16-16-16	1.00	1"-11.5	1
2434-20-20-20	2539-20-20-20	1.25	1-1/4"-11.5	1-1/4
2434-24-24-24	2539-24-24-24	1.50	1-1/2"-11.5	1-1/2
2434-32-32-32	2539-32-32-32	2.00	2"-11.5	2

COMES COMPLETE WITH BOLT KIT

Code 61 & Code 62 4-Bolt Tees



ORF / NPT / SWT

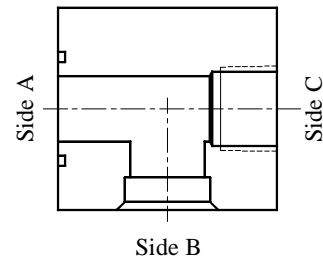
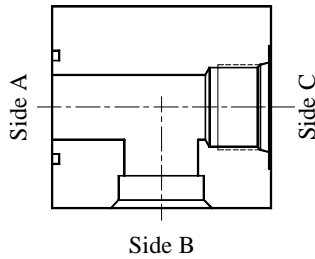
Code 61 Part No.	Code 62 Part No.	Side A (ORF)	Side B (NPT)	Side C (SWT)
2435-08-08-08	2540-08-08-08	0.50	1/2"-14	0.50
2435-12-12-12	2540-12-12-12	0.75	3/4"-14	0.75
2435-12-12-16	2540-12-12-16	0.75	3/4"-14	1.00
2435-16-16-20	2540-16-16-20	1.00	1"-11.5	1.25
2435-20-20-24	2540-20-20-24	1.25	1-1/4"-11.5	1.50
2435-24-24-32	2540-24-24-32	1.50	1-1/2"-11.5	2.00
2435-32-32-32	2540-32-32-32	2.00	2"-11.5	2.00

COMES COMPLETE WITH BOLT KIT

ORF / SWP / Companion

Code 61 Part No.	Code 62 Part No.	Side A (ORF)	Side B (SWP)	Side C (Comp)
1869-08-08-08	1871-08-08-08	0.50	1/2	0.50
1869-12-12-12	1871-12-12-12	0.75	3/4	0.75
1869-16-16-16	1871-16-16-16	1.00	1	1.00
1869-20-20-20	1871-20-20-20	1.25	1-1/4	1.25
1869-24-24-24	1871-24-24-24	1.50	1-1/2	1.50
1869-32-32-32	1871-32-32-32	2.00	2	2.00

SANDWICH STYLE BLOCK, NO BOLTS SUPPLIED



ORF / SWP / ORB

Code 61 Part No.	Code 62 Part No.	Side A (ORF)	Side B (SWP)	Side C (ORB)
2422-08-08-08	2527-08-08-08	0.50	1/2	#8 (3/4"-16)
2422-12-12-12	2527-12-12-12	0.75	3/4	#12 (1-1/16"-12)
2422-16-16-16	2527-16-16-16	1.00	1	#16 (1-5/16"-12)
2422-20-20-20	2527-20-20-20	1.25	1-1/4	#20 (1-5/8"-12)
2422-24-24-24	2527-24-24-24	1.50	1-1/2	#24 (1-7/8"-12)
2422-32-32-32	2527-32-32-32	2.00	2	#32 (2-1/2"-12)

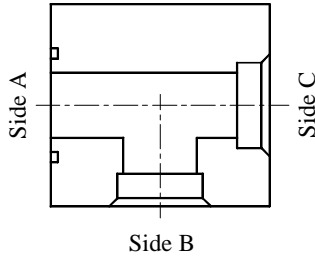
COMES COMPLETE WITH BOLT KIT

ORF / SWP / NPT

Code 61 Part No.	Code 62 Part No.	Side A (ORF)	Side B (SWP)	Side C (NPT)
2423-08-08-08	2528-08-08-08	0.50	1/2	1/2"-14
2423-12-12-12	2528-12-12-12	0.75	3/4	3/4"-14
2423-16-16-16	2528-16-16-16	1.00	1	1"-11.5
2423-20-20-20	2528-20-20-20	1.25	1-1/4	1-1/4"-11.5
2423-24-24-24	2528-24-24-24	1.50	1-1/2	1-1/2"-11.5
2423-32-32-32	2528-32-32-32	2.00	2	2"-11.5

COMES COMPLETE WITH BOLT KIT

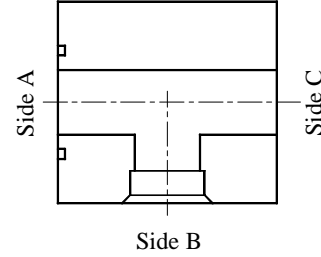
Code 61 & Code 62 4-Bolt Tees



ORF / SWP / SWP

Code 61 Part No.	Code 62 Part No.	Side A (ORF)	Side B (SWP)	Side C (SWP)
2420-08-08-08	2525-08-08-08	0.50	1/2	1/2
2420-12-12-12	2525-12-12-12	0.75	3/4	3/4
2420-16-16-16	2525-16-16-16	1.00	1	1
2420-20-20-20	2525-20-20-20	1.25	1-1/4	1-1/4
2420-24-24-24	2525-24-24-24	1.50	1-1/2	1-1/2
2420-32-32-32	2525-32-32-32	2.00	2	2

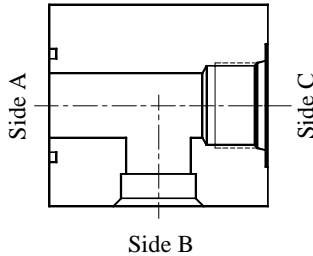
COMES COMPLETE WITH BOLT KIT



ORF / SWT / Companion

Code 61 Part No.	Code 62 Part No.	Side A (ORF)	Side B (SWT)	Side C (Comp)
2424-08-08-08	2529-08-08-08	0.50	0.50	0.50
2424-12-12-12	2529-12-12-12	0.75	0.75	0.75
2424-12-16-12	2529-12-16-12	0.75	1.00	1.00
2424-16-20-16	2529-16-20-16	1.00	1.25	1.25
2424-20-24-20	2529-20-24-20	1.25	1.50	1.50
2424-24-32-24	2529-24-32-24	1.50	2.00	2.00
2424-32-32-32	2529-32-32-32	2.00	2.00	2.00

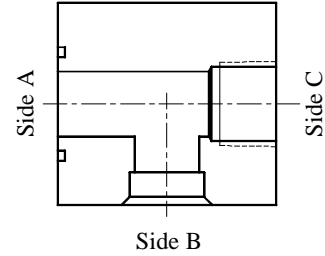
SANDWICH STYLE BLOCK, NO BOLTS SUPPLIED



ORF / SWT / ORB

Code 61 Part No.	Code 62 Part No.	Side A (ORF)	Side B (SWT)	Side C (ORB)
2427-08-08-08	2532-08-08-08	0.50	0.50	#8 (3/4"-16)
2427-12-12-12	2532-12-12-12	0.75	0.75	#12 (1-1/16"-12)
2427-16-20-16	2532-16-20-16	1.00	1.25	#16 (1-5/16"-12)
2427-20-24-20	2532-20-24-20	1.25	1.50	#20 (1-5/8"-12)
2427-24-32-24	2532-24-32-24	1.50	2.00	#24 (1-7/8"-12)
2427-32-32-32	2532-32-32-32	2.00	2.00	#32 (2-1/2"-12)

COMES COMPLETE WITH BOLT KIT

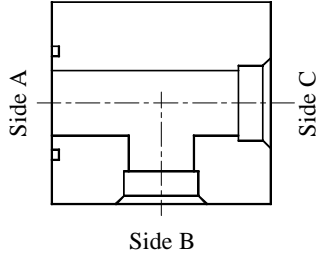


ORF / SWT / NPT

Code 61 Part No.	Code 62 Part No.	Side A (ORF)	Side B (SWT)	Side C (NPT)
2428-08-08-08	2533-08-08-08	0.50	0.50	1/2"-14
2428-12-12-12	2533-12-12-12	0.75	0.75	3/4"-14
2428-12-16-16	2533-12-16-16	0.75	1.00	1"-11.5
2428-16-20-16	2533-16-20-16	1.00	1.25	1"-11.5
2428-20-24-20	2533-20-24-20	1.25	1.50	1-1/4"-11.5
2428-24-32-24	2533-24-32-24	1.50	2.00	1-1/2"-11.5
2428-32-32-32	2533-32-32-32	2.00	2.00	2"-11.5

COMES COMPLETE WITH BOLT KIT

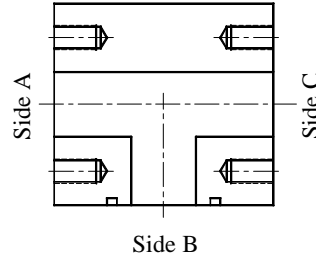
Code 61 & Code 62 4-Bolt Tees



ORF / SWT / SWT

Code 61 Part No.	Code 62 Part No.	Side A (ORF)	Side B (SWT)	Side C (SWT)
2426-08-08-08	2531-08-08-08	0.50	0.50	0.50
2426-12-12-12	2531-12-12-12	0.75	0.75	0.75
2426-12-16-16	2531-12-16-16	0.75	1.00	1.00
2426-16-20-20	2531-16-20-20	1.00	1.25	1.25
2426-20-24-24	2531-20-24-24	1.25	1.50	1.50
2426-24-32-32	2531-24-32-32	1.50	2.00	2.00
2426-32-32-32	2531-32-32-32	2.00	2.00	2.00

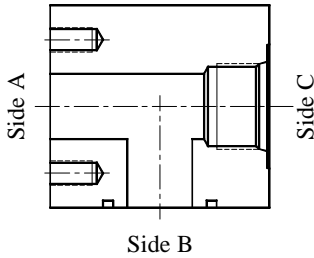
COMES COMPLETE WITH BOLT KIT



Companion / ORF / Companion

Code 61 Part No.	Code 62 Part No.	Side A (Comp)	Side B (ORF)	Side C (Comp)
2012-08-08-08	2015-08-08-08	0.50	0.50	0.50
2012-12-12-12	2015-12-12-12	0.75	0.75	0.75
2012-16-16-16	2015-16-16-16	1.00	1.00	1.00
2012-20-20-20	2015-20-20-20	1.25	1.25	1.25
2012-24-24-24	2015-24-24-24	1.50	1.50	1.50
2012-32-32-32	2015-32-32-32	2.00	2.00	2.00

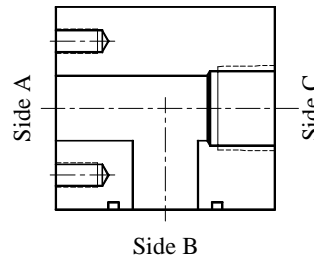
COMES COMPLETE WITH BOLT KIT



Companion / ORF / ORB

Code 61 Part No.	Code 62 Part No.	Side A (Comp)	Side B (ORF)	Side C (ORB)
2375-08-08-08	2498-08-08-08	0.50	0.50	#8 (3/4"-16)
2375-12-12-12	2498-12-12-12	0.75	0.75	#12 (1-1/16"-12)
2375-16-16-16	2498-16-16-16	1.00	1.00	#16 (1-5/16"-12)
2375-20-20-20	2498-20-20-20	1.25	1.25	#20 (1-5/8"-12)
2375-24-24-24	2498-24-24-24	1.50	1.50	#24 (1-7/8"-12)
2375-32-32-32	2498-32-32-32	2.00	2.00	#32 (2-1/2"-12)

COMES COMPLETE WITH BOLT KIT

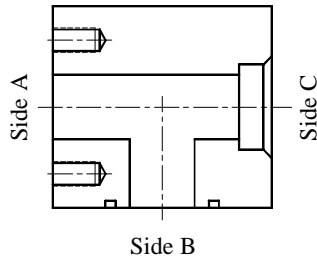


Companion / ORF / NPT

Code 61 Part No.	Code 62 Part No.	Side A (Comp)	Side B (ORF)	Side C (NPT)
2376-08-08-08	2499-08-08-08	0.50	0.50	1/2"-14
2376-12-12-12	2499-12-12-12	0.75	0.75	3/4"-14
2376-16-16-16	2499-16-16-16	1.00	1.00	1"-11.5
2376-20-20-20	2499-20-20-20	1.25	1.25	1-1/4"-11.5
2376-24-24-24	2499-24-24-24	1.50	1.50	1-1/2"-11.5
2376-32-32-32	2499-32-32-32	2.00	2.00	2"-11.5

COMES COMPLETE WITH BOLT KIT

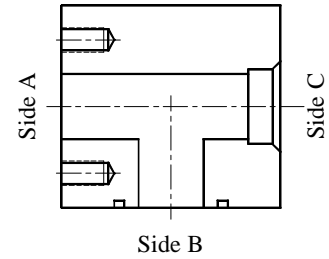
Code 61 & Code 62 4-Bolt Tees



Companion / ORF / SWP

Code 61 Part No.	Code 62 Part No.	Side A (Comp)	Side B (ORF)	Side C (SWP)
2373-08-08-08	2496-08-08-08	0.50	0.50	1/2
2373-12-12-12	2496-12-12-12	0.75	0.75	3/4
2373-16-16-16	2496-16-16-16	1.00	1.00	1
2373-20-20-20	2496-20-20-20	1.25	1.25	1-1/4
2373-24-24-24	2496-24-24-24	1.50	1.50	1-1/2
2373-32-32-32	2496-32-32-32	2.00	2.00	2

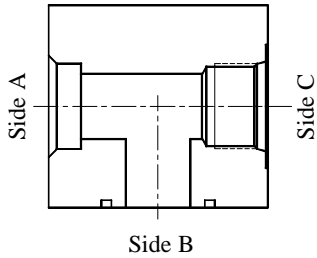
COMES COMPLETE WITH BOLT KIT



Companion / ORF / SWT

Code 61 Part No.	Code 62 Part No.	Side A (Comp)	Side B (ORF)	Side C (SWT)
2374-08-08-08	2497-08-08-08	0.50	0.50	0.50
2374-12-12-12	2497-12-12-12	0.75	0.75	0.75
2374-16-16-20	2497-16-16-20	1.00	1.00	1.25
2374-20-20-24	2497-20-20-24	1.25	1.25	1.50
2374-24-24-32	2497-24-24-32	1.50	1.50	2.00
2374-32-32-32	2497-32-32-32	2.00	2.00	2.00

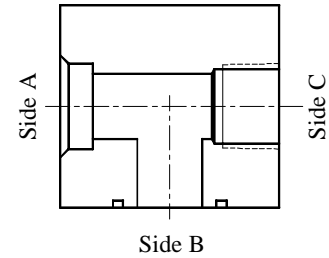
COMES COMPLETE WITH BOLT KIT



SWP / ORF / ORB

Code 61 Part No.	Code 62 Part No.	Side A (SWP)	Side B (ORF)	Side C (ORB)
2401-08-08-08	2442-08-08-08	1/2	0.50	#8 (3/4"-16)
2401-12-12-12	2442-12-12-12	3/4	0.75	#12 (1-1/16"-12)
2401-16-16-16	2442-16-16-16	1	1.00	#16 (1-5/16"-12)
2401-20-20-20	2442-20-20-20	1-1/4	1.25	#20 (1-5/8"-12)
2401-24-24-24	2442-24-24-24	1-1/2	1.50	#24 (1-7/8"-12)
2401-32-32-32	2442-32-32-32	2	2.00	#32 (2-1/2"-12)

COMES COMPLETE WITH BOLT KIT

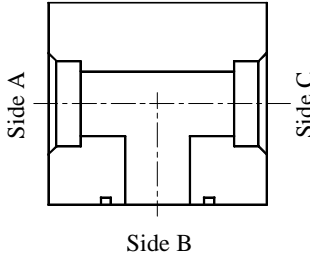


SWP / ORF / NPT

Code 61 Part No.	Code 62 Part No.	Side A (SWP)	Side B (ORF)	Side C (NPT)
2402-08-08-08	2443-08-08-08	1/2	0.50	1/2"-14
2402-12-12-12	2443-12-12-12	3/4	0.75	3/4"-14
2402-16-16-16	2443-16-16-16	1	1.00	1"-11.5
2402-20-20-20	2443-20-20-20	1-1/4	1.25	1-1/4"-11.5
2402-24-24-24	2443-24-24-24	1-1/2	1.50	1-1/2"-11.5
2402-32-32-32	2443-32-32-32	2	2.00	2"-11.5

COMES COMPLETE WITH BOLT KIT

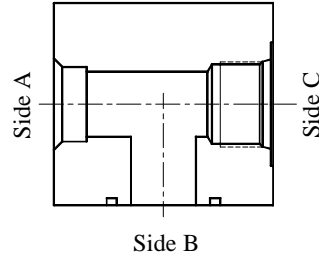
Code 61 & Code 62 4-Bolt Tees



SWP / ORF / SWP

Code 61 Part No.	Code 62 Part No.	Side A (SWP)	Side B (ORF)	Side C (SWP)
2014-08-08-08	2017-08-08-08	1/2	0.50	1/2
2014-12-12-12	2017-12-12-12	3/4	0.75	3/4
2014-16-16-16	2017-16-16-16	1	1.00	1
2014-20-20-20	2017-20-20-20	1-1/4	1.25	1-1/4
2014-24-24-24	2017-24-24-24	1-1/2	1.50	1-1/2
2014-32-32-32	2017-32-32-32	2	2.00	2

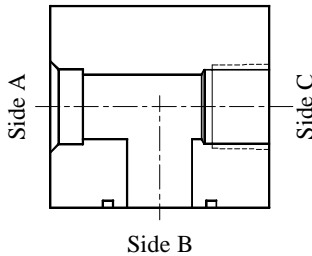
COMES COMPLETE WITH BOLT KIT



SWT / ORF / ORB

Code 61 Part No.	Code 62 Part No.	Side A (SWT)	Side B (ORF)	Side C (ORB)
2407-08-08-08	2448-08-08-08	0.50	0.50	#8 (3/4"-16)
2407-12-12-12	2448-12-12-12	0.75	0.75	#12 (1-1/16"-12)
2407-16-16-16	2448-16-16-12	1.00	1.00	#16 (1-5/16"-12)
2407-20-16-16	2448-20-16-16	1.25	1.00	#16 (1-5/16"-12)
2407-24-20-20	2448-24-20-20	1.50	1.25	#20 (1-5/8"-12)
2407-32-24-24	2448-32-24-24	2.00	1.50	#24 (1-7/8"-12)
2407-32-32-32	2448-32-32-32	2.00	2.00	#32 (2-1/2"-12)

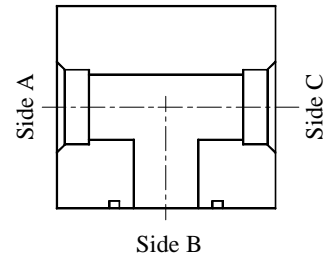
COMES COMPLETE WITH BOLT KIT



SWT / ORF / NPT

Code 61 Part No.	Code 62 Part No.	Side A (SWT)	Side B (ORF)	Side C (NPT)
2408-08-08-08	2449-08-08-08	0.50	0.50	1/2"-14
2408-12-12-12	2449-12-12-12	0.75	0.75	3/4"-14
2408-16-16-16	2449-16-16-16	1.00	1.00	1"-11.5
2408-20-16-16	2449-20-16-16	1.25	1.00	1"-11.5
2408-24-20-20	2449-24-20-20	1.50	1.25	1-1/4"-11.5
2408-32-24-24	2449-32-24-24	2.00	1.50	1-1/2"-11.5
2408-32-32-32	2449-32-32-32	2.00	2.00	2"-11.5

COMES COMPLETE WITH BOLT KIT

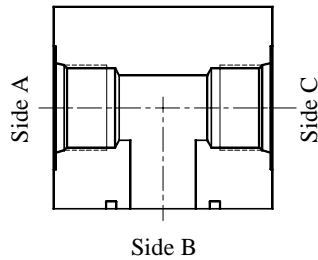


SWT / ORF / SWT

Code 61 Part No.	Code 62 Part No.	Side A (SWT)	Side B (ORF)	Side C (SWT)
2406-08-08-08	2447-08-08-08	0.50	0.50	0.50
2406-12-12-12	2447-12-12-12	0.75	0.75	0.75
2406-16-16-16	2447-16-16-16	1.00	1.00	1.00
2406-20-16-16	2447-20-16-16	1.25	1.00	1.25
2406-24-20-24	2447-24-20-24	1.50	1.25	1.50
2406-32-24-32	2447-32-24-32	2.00	1.50	2.00
2406-32-32-32	2447-32-32-32	2.00	2.00	2.00

COMES COMPLETE WITH BOLT KIT

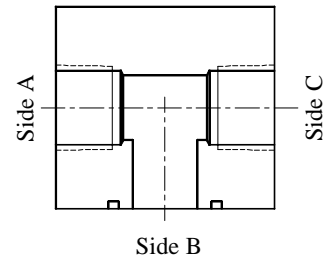
Code 61 & Code 62 4-Bolt Tees



ORB / ORF / ORB

Code 61 Part No.	Code 62 Part No.	Side A (ORB)	Side B (ORF)	Side C (ORB)
2411-08-08-08	2452-08-08-08	#8 (3/4"-16)	0.50	#8 (3/4"-16)
2411-12-12-12	2452-12-12-12	#12 (1-1/16"-12)	0.75	#12 (1-1/16"-12)
2411-16-16-16	2452-16-16-16	#16 (1-5/16"-12)	1.00	#16 (1-5/16"-12)
2411-20-20-20	2452-20-20-20	#20 (1-5/8"-12)	1.25	#20 (1-5/8"-12)
2411-24-24-24	2452-24-24-24	#24 (1-7/8"-12)	1.50	#24 (1-7/8"-12)
2411-32-32-32	2452-32-32-32	#32 (2-1/2"-12)	2.00	#32 (2-1/2"-12)

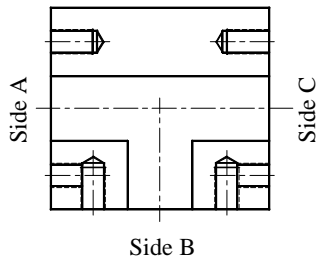
COMES COMPLETE WITH BOLT KIT



NPT / ORF / NPT

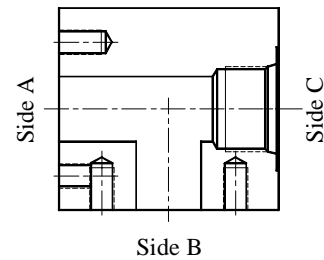
Code 61 Part No.	Code 62 Part No.	Side A (NPT)	Side B (ORF)	Side C (NPT)
2414-08-08-08	2544-08-08-08	1/2"-14	0.50	1/2"-14
2414-12-12-12	2544-12-12-12	3/4"-14	0.75	3/4"-14
2414-16-16-16	2544-16-16-16	1"-11.5	1.00	1"-11.5
2414-20-20-20	2544-20-20-20	1-1/4"-11.5	1.25	1-1/4"-11.5
2414-24-24-24	2544-24-24-24	1-1/2"-11.5	1.50	1-1/2"-11.5
2414-32-32-32	2544-32-32-32	2"-11.5	2.00	2"-11.5

COMES COMPLETE WITH BOLT KIT



Companion / Companion / Companion

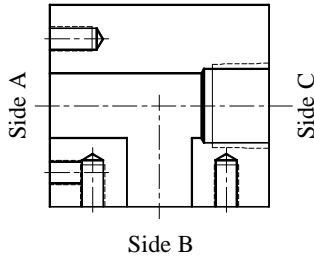
Code 61 Part No.	Code 62 Part No.	Side A (Comp)	Side B (Comp)	Side C (Comp)
1806-08-08-08	1807-08-08-08	0.50	0.50	0.50
1806-12-12-12	1807-12-12-12	0.75	0.75	0.75
1806-16-16-16	1807-16-16-16	1.00	1.00	1.00
1806-20-20-20	1807-20-20-20	1.25	1.25	1.25
1806-24-24-24	1807-24-24-24	1.50	1.50	1.50
1806-32-32-32	1807-32-32-32	2.00	2.00	2.00



Companion / Companion / ORB

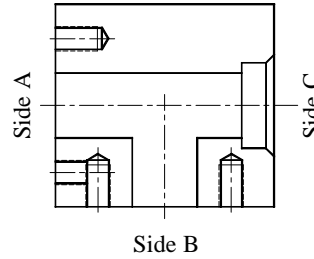
Code 61 Part No.	Code 62 Part No.	Side A (Comp)	Side B (Comp)	Side C (ORB)
2371-08-08-08	2494-08-08-08	0.50	0.50	#8 (3/4"-16)
2371-12-12-12	2494-12-12-12	0.75	0.75	#12 (1-1/16"-12)
2371-16-16-16	2494-16-16-16	1.00	1.00	#16 (1-5/16"-12)
2371-20-20-20	2494-20-20-20	1.25	1.25	#20 (1-5/8"-12)
2371-24-24-24	2494-24-24-24	1.50	1.50	#24 (1-7/8"-12)
2371-32-32-32	2494-32-32-32	2.00	2.00	#32 (2-1/2"-12)

Code 61 & Code 62 4-Bolt Tees



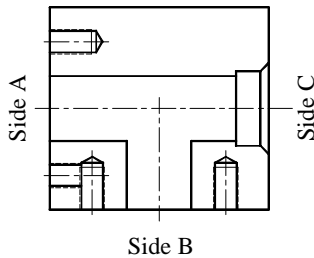
Companion / Companion / NPT

Code 61 Part No.	Code 62 Part No.	Side A (Comp)	Side B (Comp)	Side C (NPT)
2372-08-08-08	2495-08-08-08	0.50	0.50	1/2"-14
2372-12-12-12	2495-12-12-12	0.75	0.75	3/4"-14
2372-16-16-16	2495-16-16-16	1.00	1.00	1"-11.5
2372-20-20-20	2495-20-20-20	1.25	1.25	1-1/4"-11.5
2372-24-24-24	2495-24-24-24	1.50	1.50	1-1/2"-11.5
2372-32-32-32	2495-32-32-32	2.00	2.00	2"-11.5



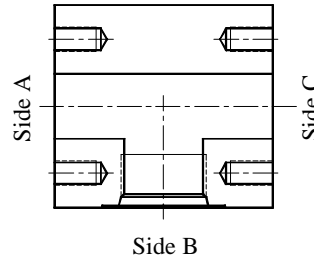
Companion / Companion / SWP

Code 61 Part No.	Code 62 Part No.	Side A (Comp)	Side B (Comp)	Side C (SWP)
1966-08-08-08	1969-08-08-08	0.50	0.50	1/2
1966-12-12-12	1969-12-12-12	0.75	0.75	3/4
1966-16-16-16	1969-16-16-16	1.00	1.00	1
1966-20-20-20	1969-20-20-20	1.25	1.25	1-1/4
1966-24-24-24	1969-24-24-24	1.50	1.50	1-1/2
1966-32-32-32	1969-32-32-32	2.00	2.00	2



Companion / Companion / SWT

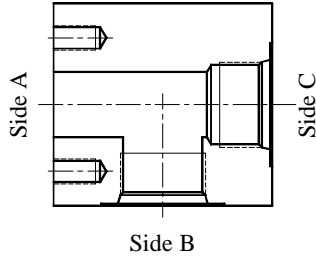
Code 61 Part No.	Code 62 Part No.	Side A (Comp)	Side B (Comp)	Side C (SWT)
2370-08-08-08	2493-08-08-08	0.50	0.50	0.50
2370-12-12-12	2493-12-12-12	0.75	0.75	0.75
2370-12-12-16	2493-12-12-16	0.75	0.75	1.00
2370-16-16-20	2493-16-16-20	1.00	1.00	1.25
2370-20-20-24	2493-20-20-24	1.25	1.25	1.50
2370-24-24-32	2493-24-24-32	1.50	1.50	2.00
2370-32-32-32	2493-32-32-32	2.00	2.00	2.00



Companion / ORB / Companion

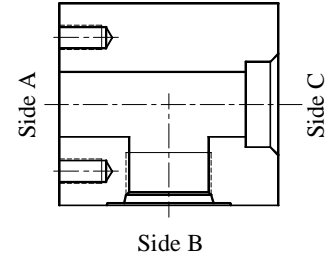
Code 61 Part No.	Code 62 Part No.	Side A (Comp)	Side B (ORB)	Side C (Comp)
2387-08-08-08	2510-08-08-08	0.50	#8 (3/4"-16)	0.50
2387-12-12-12	2510-12-12-12	0.75	#12 (1-1/16"-12)	0.75
2387-16-16-16	2510-16-16-16	1.00	#16 (1-5/16"-12)	1.00
2387-20-20-20	2510-20-20-20	1.25	#20 (1-5/8"-12)	1.25
2387-24-24-24	2510-24-24-24	1.50	#24 (1-7/8"-12)	1.50
2387-32-32-32	2510-32-32-32	2.00	#32 (2-1/2"-12)	2.00

Code 61 & Code 62 4-Bolt Tees



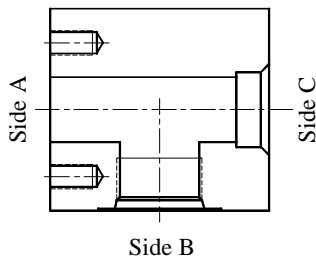
Companion / ORB / ORB

Code 61 Part No.	Code 62 Part No.	Side A (Comp)	Side B (ORB)	Side C (ORB)
2390-12-12-12	2513-12-12-12	0.75	#12 (1-1/16"-12)	#12 (1-1/16"-12)
2390-16-16-16	2513-16-16-16	1.00	#16 (1-5/16"-12)	#16 (1-5/16"-12)
2390-20-20-20	2513-20-20-20	1.25	#20 (1-5/8"-12)	#20 (1-5/8"-12)
2390-24-24-24	2513-24-24-24	1.50	#24 (1-7/8"-12)	#24 (1-7/8"-12)
2390-32-32-32	2513-32-32-32	2.00	#32 (2-1/2"-12)	#32 (2-1/2"-12)



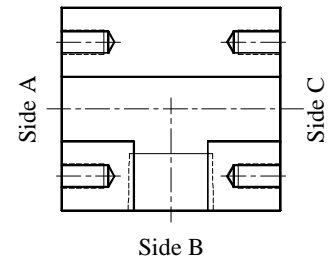
Companion / ORB / SWP

Code 61 Part No.	Code 62 Part No.	Side A (Comp)	Side B (ORB)	Side C (SWP)
2388-12-12-12	2511-12-12-12	0.75	#12 (1-1/16"-12)	3/4
2388-16-16-16	2511-16-16-16	1.00	#16 (1-5/16"-12)	1
2388-20-20-20	2511-20-20-20	1.25	#20 (1-5/8"-12)	1-1/4
2388-24-24-24	2511-24-24-24	1.50	#24 (1-7/8"-12)	1-1/2
2388-32-32-32	2511-32-32-32	2.00	#32 (2-1/2"-12)	2



Companion / ORB / SWT

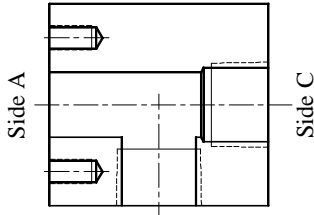
Code 61 Part No.	Code 62 Part No.	Side A (Comp)	Side B (ORB)	Side C (SWT)
2389-12-12-12	2512-12-12-12	0.75	#12 (1-1/16"-12)	0.75
2389-12-12-16	2512-12-12-16	0.75	#12 (1-1/16"-12)	1.00
2389-16-16-16	2512-16-16-16	1.00	#16 (1-5/16"-12)	1.00
2389-16-16-20	2512-16-16-20	1.00	#16 (1-5/16"-12)	1.25
2389-20-20-20	2512-20-20-20	1.25	#20 (1-5/8"-12)	1.25
2389-20-20-24	2512-20-20-24	1.25	#20 (1-5/8"-12)	1.50
2389-24-24-24	2512-24-24-24	1.50	#24 (1-7/8"-12)	1.50
2389-24-24-32	2512-24-24-32	1.50	#24 (1-7/8"-12)	2.00
2389-32-32-32	2512-32-32-32	2.00	#32 (2-1/2"-12)	2.00



Companion / NPT / Companion

Code 61 Part No.	Code 62 Part No.	Side A (Comp)	Side B (NPT)	Side C (Comp)
2392-12-12-12	2515-12-12-12	0.75	3/4"-14	0.75
2392-16-12-16	2515-16-12-16	1.00	3/4"-14	1.00
2392-16-16-16	2515-16-16-16	1.00	1"-11.5	1.00
2392-20-16-20	2515-20-16-20	1.25	1"-11.5	1.25
2392-20-20-20	2515-20-20-20	1.25	1-1/4"-11.5	1.25
2392-24-20-24	2515-24-20-24	1.50	1-1/4"-11.5	1.50
2392-24-24-24	2515-24-24-24	1.50	1-1/2"-11.5	1.50
2392-32-24-32	2515-32-24-32	2.00	1-1/2"-11.5	2.00
2392-32-32-32	2515-32-32-32	2.00	2"-11.5	2.00

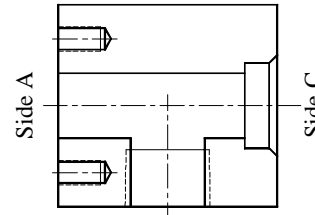
Code 61 & Code 62 4-Bolt Tees



Side B

Companion / NPT / NPT

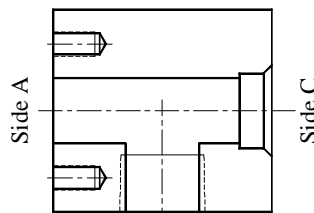
Code 61 Part No.	Code 62 Part No.	Side A (Comp)	Side B (NPT)	Side C (NPT)
2396-12-12-12	2519-12-12-12	0.75	3/4"-14	3/4"-14
2396-16-12-12	2519-16-12-12	1.00	3/4"-14	3/4"-14
2396-16-16-16	2519-16-16-16	1.00	1"-11.5	1"-11.5
2396-20-16-16	2519-20-16-16	1.25	1"-11.5	1"-11.5
2396-20-20-20	2519-20-20-20	1.25	1-1/4"-11.5	1-1/4"-11.5
2396-24-20-20	2519-24-20-20	1.50	1-1/4"-11.5	1-1/4"-11.5
2396-24-24-24	2519-24-24-24	1.50	1-1/2"-11.5	1-1/2"-11.5
2396-32-24-24	2519-32-24-24	2.00	1-1/2"-11.5	1-1/2"-11.5
2396-32-32-32	2519-32-32-32	2.00	2"-11.5	2"-11.5



Side B

Companion / NPT / SWP

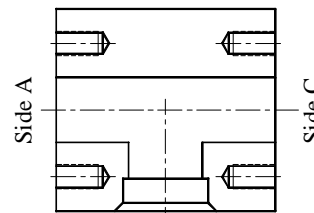
Code 61 Part No.	Code 62 Part No.	Side A (Comp)	Side B (NPT)	Side C (SWP)
2393-12-12-12	2516-12-12-12	0.75	3/4"-14	3/4
2393-16-12-12	2516-16-12-12	1.00	3/4"-14	3/4
2393-16-16-16	2516-16-16-16	1.00	1"-11.5	1
2393-20-16-16	2516-20-16-16	1.25	1"-11.5	1
2393-20-20-20	2516-20-20-20	1.25	1-1/4"-11.5	1-1/4
2393-24-20-20	2516-24-20-20	1.50	1-1/4"-11.5	1-1/4
2393-24-24-24	2516-24-24-24	1.50	1-1/2"-11.5	1-1/2
2393-32-24-24	2516-32-24-24	2.00	1-1/2"-11.5	1-1/2
2393-32-32-32	2516-32-32-32	2.00	2"-11.5	2



Side B

Companion / NPT / SWT

Code 61 Part No.	Code 62 Part No.	Side A (Comp)	Side B (NPT)	Side C (SWT)
2394-12-12-12	2517-12-12-12	0.75	3/4"-14	0.75
2394-12-12-16	2517-12-12-16	0.75	3/4"-14	1.00
2394-16-16-16	2517-16-16-16	1.00	1"-11.5	1.00
2394-16-16-20	2517-16-16-20	1.00	1"-11.5	1.25
2394-20-20-20	2517-20-20-20	1.25	1-1/4"-11.5	1.25
2394-20-20-24	2517-20-20-24	1.25	1-1/4"-11.5	1.50
2394-24-24-24	2517-24-24-24	1.50	1-1/2"-11.5	1.50
2394-24-24-32	2517-24-24-32	1.50	1-1/2"-11.5	2.00
2394-32-32-32	2517-32-32-32	2.00	2"-11.5	2.00

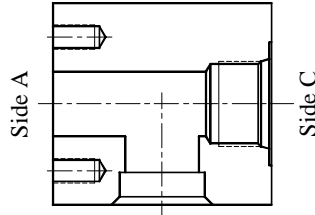


Side B

Companion / SWP / Companion

Code 61 Part No.	Code 62 Part No.	Side A (Comp)	Side B (SWP)	Side C (Comp)
2377-12-12-12	2500-12-12-12	0.75	3/4	0.75
2377-16-12-16	2500-16-12-16	1.00	3/4	1.00
2377-16-16-16	2500-16-16-16	1.00	1	1.00
2377-20-16-20	2500-20-16-20	1.25	1	1.25
2377-20-20-20	2500-20-20-20	1.25	1-1/4	1.25
2377-24-20-24	2500-24-20-24	1.50	1-1/4	1.50
2377-24-24-24	2500-24-24-24	1.50	1-1/2	1.50
2377-32-24-32	2500-32-24-32	2.00	1-1/2	2.00
2377-32-32-32	2500-32-32-32	2.00	2	2.00

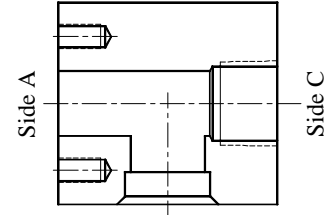
Code 61 & Code 62 4-Bolt Tees



Side B

Companion / SWP / ORB

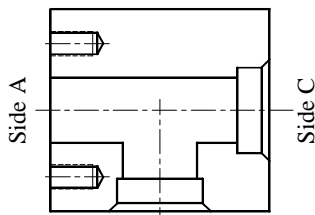
Code 61 Part No.	Code 62 Part No.	Side A (Comp)	Side B (SWP)	Side C (ORB)
2380-12-12-12	2503-12-12-12	0.75	3/4	#12 (1-1/16"-12)
2380-16-12-12	2503-16-12-12	1.00	3/4	#12 (1-1/16"-12)
2380-16-16-16	2503-16-16-16	1.00	1	#16 (1-5/16"-12)
2380-20-16-16	2503-20-16-16	1.25	1	#16 (1-5/16"-12)
2380-20-20-20	2503-20-20-20	1.25	1-1/4	#20 (1-5/8"-12)
2380-24-20-20	2503-24-20-20	1.50	1-1/4	#20 (1-5/8"-12)
2380-24-24-24	2503-24-24-24	1.50	1-1/2	#24 (1-7/8"-12)
2380-32-24-24	2503-32-24-24	2.00	1-1/2	#24 (1-7/8"-12)
2380-32-32-32	2503-32-32-32	2.00	2	#32 (2-1/2"-12)



Side B

Companion / SWP / NPT

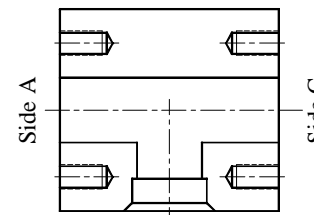
Code 61 Part No.	Code 62 Part No.	Side A (Comp)	Side B (SWP)	Side C (NPT)
2381-12-12-12	2504-12-12-12	0.75	3/4	3/4"-14
2381-16-12-12	2504-16-12-12	1.00	3/4	3/4"-14
2381-16-16-16	2504-16-16-16	1.00	1	1"-11.5
2381-20-16-16	2504-20-16-16	1.25	1	1"-11.5
2381-20-20-20	2504-20-20-20	1.25	1-1/4	1-1/4"-11.5
2381-24-20-20	2504-24-20-20	1.50	1-1/4	1-1/4"-11.5
2381-24-24-24	2504-24-24-24	1.50	1-1/2	1-1/2"-11.5
2381-32-24-24	2504-32-24-24	2.00	1-1/2	1-1/2"-11.5
2381-32-32-32	2504-32-32-32	2.00	2	2"-11.5



Side B

Companion / SWP / SWP

Code 61 Part No.	Code 62 Part No.	Side A (Comp)	Side B (SWP)	Side C (SWP)
2378-12-12-12	2501-12-12-12	0.75	3/4	3/4
2378-16-12-12	2501-16-12-12	1.00	3/4	3/4
2378-16-16-16	2501-16-16-16	1.00	1	1
2378-20-16-16	2501-20-16-16	1.25	1	1
2378-20-20-20	2501-20-20-20	1.25	1-1/4	1-1/4
2378-24-20-20	2501-24-20-20	1.50	1-1/4	1-1/4
2378-24-24-24	2501-24-24-24	1.50	1-1/2	1-1/2
2378-32-24-24	2501-32-24-24	2.00	1-1/2	1-1/2
2378-32-32-32	2501-32-32-32	2.00	2	2

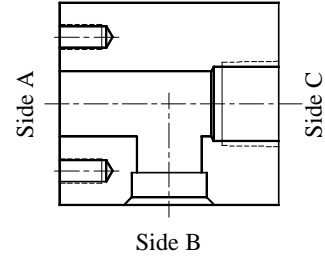
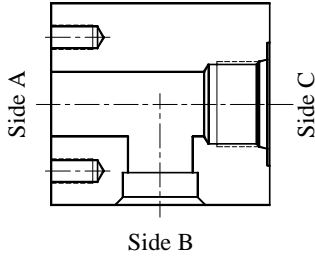


Side B

Companion / SWT / Companion

Code 61 Part No.	Code 62 Part No.	Side A (Comp)	Side B (SWT)	Side C (Comp)
2382-12-12-12	2505-12-12-12	0.75	0.75	0.75
2382-12-16-12	2505-12-16-12	0.75	1.00	0.75
2382-16-16-16	2505-16-16-16	1.00	1.00	1.00
2382-16-20-16	2505-16-20-16	1.00	1.25	1.00
2382-20-20-20	2505-20-20-20	1.25	1.25	1.25
2382-20-24-20	2505-20-24-20	1.25	1.50	1.25
2382-24-24-24	2505-24-24-24	1.50	1.50	1.50
2382-24-32-24	2505-24-32-24	1.50	2.00	1.50
2382-32-32-32	2505-32-32-32	2.00	2.00	2.00

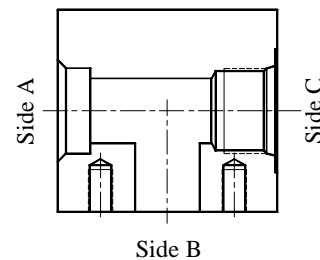
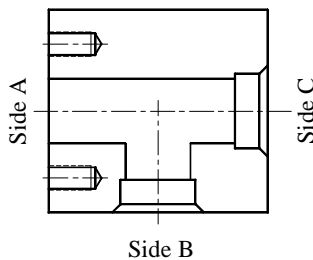
Code 61 & Code 62 4-Bolt Tees


Companion / SWT / ORB

Code 61 Part No.	Code 62 Part No.	Side A (Comp)	Side B (SWT)	Side C (ORB)
2385-12-12-12	2508-12-12-12	0.75	0.75	#12 (1-1/16"-12)
2385-16-12-12	2508-16-12-12	1.00	0.75	#12 (1-1/16"-12)
2385-16-16-16	2508-16-16-16	1.00	1.00	#16 (1-5/16"-12)
2385-20-16-16	2508-20-16-16	1.25	1.00	#16 (1-5/16"-12)
2385-20-20-20	2508-20-20-20	1.25	1.25	#20 (1-5/8"-12)
2385-24-20-20	2508-24-20-20	1.50	1.25	#20 (1-5/8"-12)
2385-24-24-24	2508-24-24-24	1.50	1.50	#24 (1-7/8"-12)
2385-32-24-24	2508-32-24-24	2.00	1.50	#24 (1-7/8"-12)
2385-32-32-32	2508-32-32-32	2.00	2.00	#32 (2-1/2"-12)

Companion / SWT / NPT

Code 61 Part No.	Code 62 Part No.	Side A (Comp)	Side B (SWT)	Side C (NPT)
2386-12-12-12	2509-12-12-12	0.75	0.75	3/4"-14
2386-16-16-12	2509-16-16-12	1.00	1.00	3/4"-14
2386-16-20-16	2509-16-20-16	1.00	1.25	1"-11.5
2386-20-20-16	2509-20-20-16	1.25	1.25	1"-11.5
2386-20-24-20	2509-20-24-20	1.25	1.50	1-1/4"-11.5
2386-24-24-20	2509-24-24-20	1.50	1.50	1-1/4"-11.5
2386-24-32-24	2509-24-32-24	1.50	2.00	1-1/2"-11.5
2386-32-32-24	2509-32-32-24	2.00	2.00	1-1/2"-11.5
2386-32-32-32	2509-32-32-32	2.00	2.00	2"-11.5

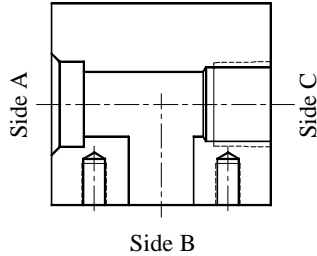

Companion / SWT / SWT

Code 61 Part No.	Code 62 Part No.	Side A (Comp)	Side B (SWT)	Side C (SWT)
2384-12-12-12	2507-12-12-12	0.75	0.75	0.75
2384-16-16-16	2507-16-16-16	1.00	1.00	1.00
2384-16-20-20	2507-16-20-20	1.00	1.25	1.25
2384-20-20-20	2507-20-20-20	1.25	1.25	1.25
2384-20-24-24	2507-20-24-24	1.25	1.50	1.50
2384-24-24-24	2507-24-24-24	1.50	1.50	1.50
2384-24-32-32	2507-24-32-32	1.50	2.00	2.00
2384-32-32-32	2507-32-32-32	2.00	2.00	2.00

SWP / Companion / ORB

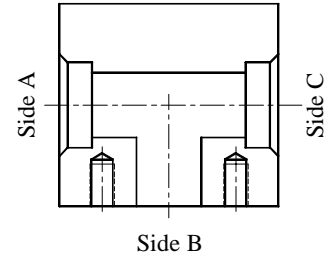
Code 61 Part No.	Code 62 Part No.	Side A (SWP)	Side B (Comp)	Side C (ORB)
2398-12-12-12	2439-12-12-12	3/4	0.75	#12 (1-1/16"-12)
2398-16-12-12	2439-16-12-12	3/4	1.00	#12 (1-1/16"-12)
2398-16-16-16	2439-16-16-16	1	1.00	#16 (1-5/16"-12)
2398-20-16-16	2439-20-16-16	1	1.25	#16 (1-5/16"-12)
2398-20-20-20	2439-20-20-20	1-1/4	1.25	#20 (1-5/8"-12)
2398-24-20-20	2439-24-20-20	1-1/4	1.50	#20 (1-5/8"-12)
2398-24-24-24	2439-24-24-24	1-1/2	1.50	#24 (1-7/8"-12)
2398-32-24-24	2439-32-24-24	1-1/2	2.00	#24 (1-7/8"-12)
2398-32-32-32	2439-32-32-32	2	2.00	#32 (2-1/2"-12)

Code 61 & Code 62 4-Bolt Tees



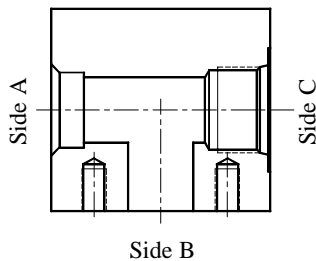
SWP / Companion / NPT

Code 61 Part No.	Code 62 Part No.	Side A (SWP)	Side B (Comp)	Side C (NPT)
2399-12-12-12	2440-12-12-12	3/4	0.75	3/4"-14
2399-16-12-12	2440-16-12-12	3/4	1.00	3/4"-14
2399-16-16-16	2440-16-16-16	1	1.00	1"-11.5
2399-20-16-16	2440-20-16-16	1	1.25	1"-11.5
2399-20-20-20	2440-20-20-20	1-1/4	1.25	1-1/4"-11.5
2399-24-20-20	2440-24-20-20	1-1/4	1.50	1-1/4"-11.5
2399-24-24-24	2440-24-24-24	1-1/2	1.50	1-1/2"-11.5
2399-32-24-24	2440-32-24-24	1-1/2	2.00	1-1/2"-11.5
2399-32-32-32	2440-32-32-32	2	2.00	2"-11.5



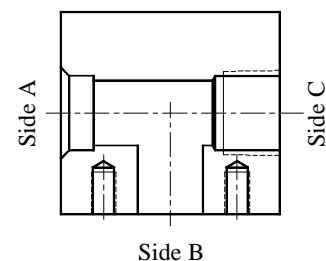
SWP / Companion / SWP

Code 61 Part No.	Code 62 Part No.	Side A (SWP)	Side B (Comp)	Side C (SWP)
1865-12-12-12	1879-12-12-12	3/4	0.75	3/4
1865-16-12-12	1879-16-12-12	3/4	1.00	3/4
1865-16-16-16	1879-16-16-16	1	1.00	1
1865-20-16-16	1879-20-16-16	1	1.25	1
1865-20-20-20	1879-20-20-20	1-1/4	1.25	1-1/4
1865-24-20-20	1879-24-20-20	1-1/4	1.50	1-1/4
1865-24-24-24	1879-24-24-24	1-1/2	1.50	1-1/2
1865-32-24-24	1879-32-24-24	1-1/2	2.00	1-1/2
1865-32-32-32	1879-32-32-32	2	2.00	2



SWT / Companion / ORB

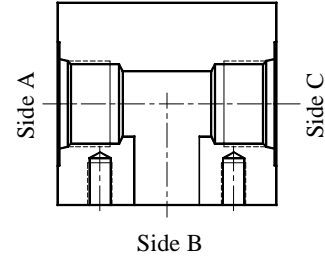
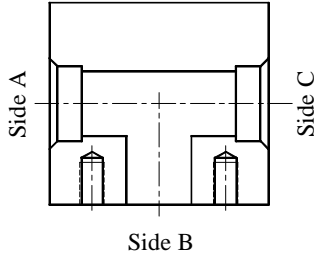
Code 61 Part No.	Code 62 Part No.	Side A (SWT)	Side B (Comp)	Side C (ORB)
2404-12-12-12	2445-12-12-12	0.75	0.75	#12 (1-1/16"-12)
2404-16-12-12	2445-16-12-12	1.00	0.75	#12 (1-1/16"-12)
2404-16-16-12	2445-16-16-12	1.00	1.00	#12 (1-1/16"-12)
2404-20-16-16	2445-20-16-16	1.25	1.00	#16 (1-5/16"-12)
2404-20-20-16	2445-20-20-16	1.25	1.25	#16 (1-5/16"-12)
2404-24-20-20	2445-24-20-20	1.50	1.25	#20 (1-5/8"-12)
2404-24-24-20	2445-24-24-20	1.50	1.50	#20 (1-5/8"-12)
2404-32-24-24	2445-32-24-24	2.00	1.50	#24 (1-7/8"-12)
2404-32-32-24	2445-32-32-24	2.00	2.00	#24 (1-7/8"-12)
2404-32-32-32	2445-32-32-32	2.00	2.00	#32 (2-1/2"-12)



SWT / Companion / NPT

Code 61 Part No.	Code 62 Part No.	Side A (SWT)	Side B (Comp)	Side C (NPT)
2405-12-12-12	2446-12-12-12	0.75	0.75	3/4"-14
2405-16-12-12	2446-16-12-12	1.00	0.75	3/4"-14
2405-16-16-12	2446-16-16-12	1.00	1.00	3/4"-14
2405-20-16-16	2446-20-16-16	1.25	1.00	1"-11.5
2405-20-20-16	2446-20-20-16	1.25	1.25	1"-11.5
2405-24-20-20	2446-24-20-20	1.50	1.25	1-1/4"-11.5
2405-24-24-20	2446-24-24-20	1.50	1.50	1-1/4"-11.5
2405-32-24-24	2446-32-24-24	2.00	1.50	1-1/2"-11.5
2405-32-32-24	2446-32-32-24	2.00	2.00	1-1/2"-11.5
2405-32-32-32	2446-32-32-32	2.00	2.00	2"-11.5

Code 61 & Code 62 4-Bolt Tees

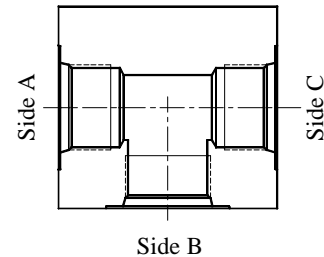
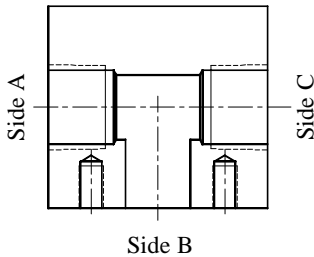


SWT / Companion / SWT

Code 61 Part No.	Code 62 Part No.	Side A (SWT)	Side B (Comp)	Side C (SWT)
2403-12-12-12	2444-12-12-12	0.75	0.75	0.75
2403-16-12-16	2444-16-12-16	1.00	0.75	1.00
2403-16-16-16	2444-16-16-16	1.00	1.00	1.00
2403-20-16-20	2444-20-16-20	1.25	1.00	1.25
2403-20-20-20	2444-20-20-20	1.25	1.25	1.25
2403-24-20-24	2444-24-20-24	1.50	1.25	1.50
2403-24-24-24	2444-24-24-24	1.50	1.50	1.50
2403-32-24-32	2444-32-24-32	2.00	1.50	2.00
2406-32-32-32	2444-32-32-32	2.00	2.00	2.00

ORB / Companion / ORB

Code 61 Part No.	Code 62 Part No.	Side A (ORB)	Side B (Comp)	Side C (ORB)
2409-12-12-12	2450-12-12-12	#12 (1-1/16"-12)	0.75	#12 (1-1/16"-12)
2409-12-16-12	2450-12-16-12	#12 (1-1/16"-12)	1.00	#12 (1-1/16"-12)
2409-16-16-16	2450-16-16-16	#16 (1-5/16"-12)	1.00	#16 (1-5/16"-12)
2409-16-20-16	2450-16-20-16	#16 (1-5/16"-12)	1.25	#16 (1-5/16"-12)
2409-20-20-20	2450-20-20-20	#20 (1-5/8"-12)	1.25	#20 (1-5/8"-12)
2409-20-24-20	2450-20-24-20	#20 (1-5/8"-12)	1.50	#20 (1-5/8"-12)
2409-24-24-24	2450-24-24-24	#24 (1-7/8"-12)	1.50	#24 (1-7/8"-12)
2409-24-32-24	2450-24-32-24	#24 (1-7/8"-12)	2.00	#24 (1-7/8"-12)
2409-32-32-32	2450-32-32-32	#32 (2-1/2"-12)	2.00	#32 (2-1/2"-12)



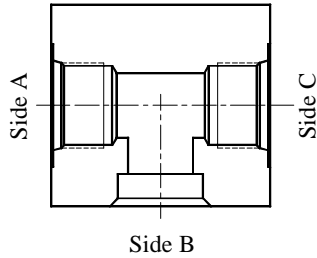
NPT / Companion / NPT

Code 61 Part No.	Code 62 Part No.	Side A (NPT)	Side B (Comp)	Side C (NPT)
2413-12-12-12	2543-12-12-12	3/4"-14	0.75	3/4"-14
2413-12-16-12	2543-12-16-12	3/4"-14	1.00	3/4"-14
2413-16-16-16	2543-16-16-16	1"-11.5	1.00	1"-11.5
2413-16-20-16	2543-16-20-16	1"-11.5	1.25	1"-11.5
2413-20-20-20	2543-20-20-20	1-1/4"-11.5	1.25	1-1/4"-11.5
2413-20-24-20	2543-20-24-20	1-1/4"-11.5	1.50	1-1/4"-11.5
2413-24-24-24	2543-24-24-24	1-1/2"-11.5	1.50	1-1/2"-11.5
2413-24-32-24	2543-24-32-24	1-1/2"-11.5	2.00	1-1/2"-11.5
2413-32-32-32	2543-32-32-32	2"-11.5	2.00	2"-11.5

ORB / ORB / ORB

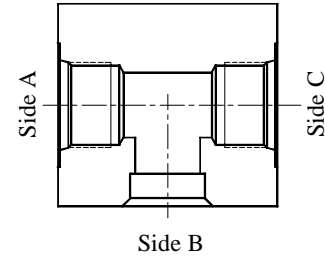
Part No.	Side A (ORB)	Side B (ORB)	Side C (ORB)
2485-08-08-08	#8 (3/4"-16)	#8 (3/4"-16)	#8 (3/4"-16)
2485-12-12-12	#12 (1-1/16"-12)	#12 (1-1/16"-12)	#12 (1-1/16"-12)
2485-16-16-16	#16 (1-5/16"-12)	#16 (1-5/16"-12)	#16 (1-5/16"-12)
2485-20-20-20	#20 (1-5/8"-12)	#20 (1-5/8"-12)	#20 (1-5/8"-12)
2485-24-24-24	#24 (1-7/8"-12)	#24 (1-7/8"-12)	#24 (1-7/8"-12)
2485-32-32-32	#32 (2-1/2"-12)	#32 (2-1/2"-12)	#32 (2-1/2"-12)

Code 61 & Code 62 4-Bolt Tees



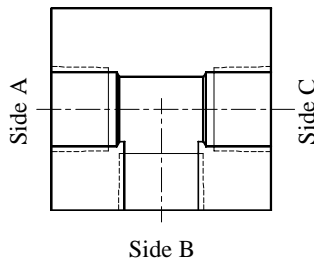
ORB / SWP / ORB

Part No.	Side A (ORB)	Side B (SWP)	Side C (ORB)
2481-16-16-16	#16 (1-5/16"-12)	1	#16 (1-5/16"-12)
2481-16-20-16	#16 (1-5/16"-12)	1-1/4	#16 (1-5/16"-12)
2481-20-20-20	#20 (1-5/8"-12)	1-1/4	#20 (1-5/8"-12)
2481-20-24-20	#20 (1-5/8"-12)	1-1/2	#20 (1-5/8"-12)
2481-24-24-24	#24 (1-7/8"-12)	1-1/2	#24 (1-7/8"-12)
2481-24-32-24	#24 (1-7/8"-12)	2	#24 (1-7/8"-12)
2481-32-32-32	#32 (2-1/2"-12)	2	#32 (2-1/2"-12)



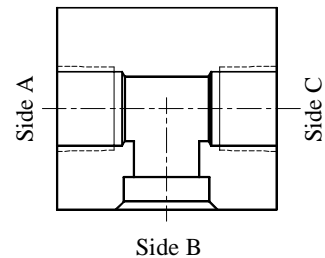
ORB / SWT / ORB

Part No.	Side A (ORB)	Side B (SWT)	Side C (ORB)
2483-12-16-12	#12 (1-1/16"-12)	1.00	#12 (1-1/16"-12)
2483-16-20-16	#16 (1-5/16"-12)	1.25	#16 (1-5/16"-12)
2483-20-24-20	#20 (1-5/8"-12)	1.50	#20 (1-5/8"-12)
2483-24-32-24	#24 (1-7/8"-12)	2.00	#24 (1-7/8"-12)
2483-32-32-32	#32 (2-1/2"-12)	2.00	#32 (2-1/2"-12)



NPT / NPT / NPT

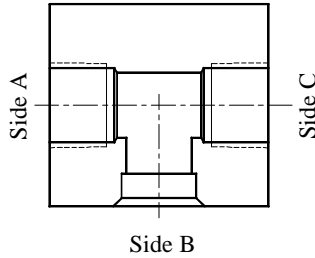
Part No.	Side A (NPT)	Side B (NPT)	Side C (NPT)
2492-12-12-12	3/4"-14	3/4"-14	3/4"-14
2492-16-16-16	1"-11.5	1"-11.5	1"-11.5
2492-20-20-20	1-1/4"-11.5	1-1/4"-11.5	1-1/4"-11.5
2492-24-24-24	1-1/2"-11.5	1-1/2"-11.5	1-1/2"-11.5
2492-32-32-32	2"-11.5	2"-11.5	2"-11.5



NPT / SWP / NPT

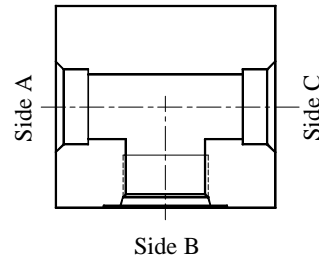
Part No.	Side A (NPT)	Side B (SWP)	Side C (NPT)
2489-12-12-12	3/4"-14	3/4	3/4"-14
2489-16-16-16	1"-11.5	1	1"-11.5
2489-20-20-20	1-1/4"-11.5	1-1/4	1-1/4"-11.5
2489-24-24-24	1-1/2"-11.5	1-1/2	1-1/2"-11.5
2489-32-32-32	2"-11.5	2	2"-11.5

Weld-On & Threaded Tees



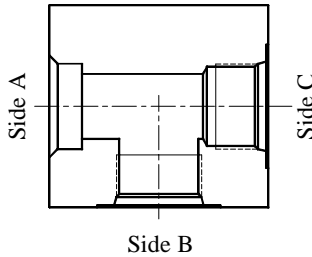
NPT / SWT / NPT

Part No.	Side A (NPT)	Side B (SWT)	Side C (NPT)
2490-12-16-12	3/4"-14	1	3/4"-14
2490-16-20-16	1"-11.5	1-1/4	1"-11.5
2490-20-24-20	1-1/4"-11.5	1-1/2	1-1/4"-11.5
2490-24-32-24	1-1/2"-11.5	2	1-1/2"-11.5



SWP / ORB / SWP

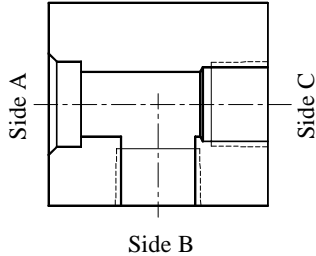
Part No.	Side A (SWP)	Side B (ORB)	Side C (SWP)
2058-12-08-12	3/4	#8 (3/4"-16)	3/4
2058-12-12-12	3/4	#12 (1-1/16"-12)	3/4
2058-16-08-16	1	#8 (3/4"-16)	1
2058-16-12-16	1	#12 (1-1/16"-12)	1
2058-16-16-16	1	#16 (1-5/16"-12)	1
2058-20-12-20	1-1/4	#12 (1-1/16"-12)	1-1/4
2058-20-16-20	1-1/4	#16 (1-5/16"-12)	1-1/4
2058-20-20-20	1-1/4	#20 (1-5/8"-12)	1-1/4
2058-24-12-24	1-1/2	#12 (1-1/16"-12)	1-1/2
2058-24-16-24	1-1/2	#16 (1-5/16"-12)	1-1/2
2058-24-20-24	1-1/2	#20 (1-5/8"-12)	1-1/2
2058-32-12-32	2	#12 (1-1/16"-12)	2
2058-32-16-32	2	#16 (1-5/16"-12)	2
2058-32-20-32	2	#20 (1-5/8"-12)	2
2058-40-16-40	2-1/2	#16 (1-5/16"-12)	2-1/2
2058-40-20-40	2-1/2	#20 (1-5/8"-12)	2-1/2
2058-48-16-48	3	#16 (1-5/16"-12)	3
2058-48-20-48	3	#20 (1-5/8"-12)	3
2058-64-16-64	4	#16 (1-5/16"-12)	4
2058-64-20-64	4	#20 (1-5/8"-12)	4



SWP / ORB / ORB

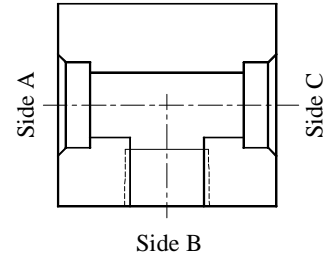
Part No.	Side A (SWP)	Side B (ORB)	Side C (ORB)
2463-12-12-12	3/4	#12 (1-1/16"-12)	#12 (1-1/16"-12)
2463-16-16-16	1	#16 (1-5/16"-12)	#16 (1-5/16"-12)
2463-20-20-20	1-1/4	#20 (1-5/8"-12)	#20 (1-5/8"-12)
2463-24-20-20	1-1/2	#20 (1-5/8"-12)	#20 (1-5/8"-12)
2463-24-24-24	1-1/2	#24 (1-7/8"-12)	#24 (1-7/8"-12)
2463-32-24-24	2	#24 (1-7/8"-12)	#24 (1-7/8"-12)
2463-32-32-32	2	#32 (2-1/2"-12)	#32 (2-1/2"-12)

Weld-On & Threaded Tees



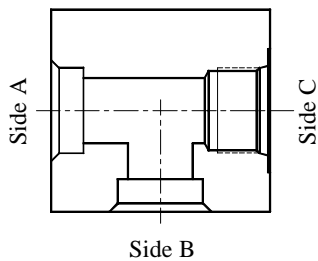
SWP / NPT / NPT

Part No.	Side A (SWP)	Side B (NPT)	Side C (NPT)
2468-12-12-12	3/4	3/4"-14	3/4"-14
2468-16-16-16	1	1"-11.5	1"-11.5
2468-20-20-20	1-1/4	1-1/4"-11.5	1-1/4"-11.5
2468-24-24-24	1-1/2	1-1/2"-11.5	1-1/2"-11.5
2468-32-32-32	2	2"-11.5	2"-11.5



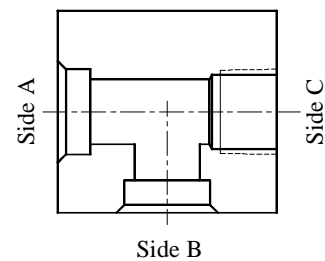
SWP / NPT / SWP

Part No.	Side A (SWP)	Side B (NPT)	Side C (SWP)
2465-12-12-12	3/4	3/4"-14	3/4
2465-16-16-16	1	1"-11.5	1
2465-20-20-20	1-1/4	1-1/4"-11.5	1-1/4
2465-24-24-24	1-1/2	1-1/2"-11.5	1-1/2
2465-32-32-32	2	2"-11.5	2



SWP / SWP / ORB

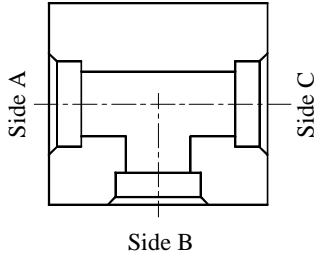
Part No.	Side A (SWP)	Side B (SWP)	Side C (ORB)
2456-12-12-12	3/4	3/4	#12 (1-1/16"-12)
2456-16-16-16	1	1	#16 (1-5/16"-12)
2456-20-20-20	1-1/4	1-1/4	#20 (1-5/8"-12)
2456-24-24-20	1-1/2	1-1/2	#20 (1-5/8"-12)
2456-24-24-24	1-1/2	1-1/2	#24 (1-7/8"-12)
2456-32-32-20	2	2	#20 (1-5/8"-12)
2456-32-32-24	2	2	#24 (1-7/8"-12)



SWP / SWP / NPT

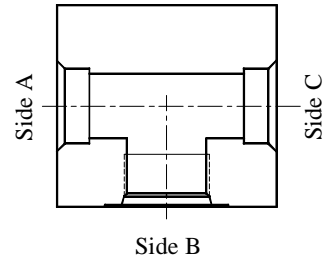
Part No.	Side A (SWP)	Side B (SWP)	Side C (NPT)
2457-12-12-12	3/4	3/4	3/4"-14
2457-16-16-16	1	1	1"-11.5
2457-20-20-20	1-1/2	1-1/2	1-1/4"-11.5
2457-24-24-24	1-1/2	1-1/2	1-1/2"-11.5
2457-32-32-32	2	2	2"-11.5
2457-40-40-40	2-1/2	2-1/2	2-1/2"-8

Weld-On & Threaded Tees



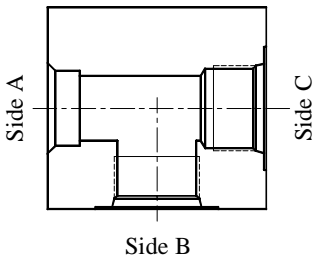
SWP / SWP / SWP

Part No.	Side A (SWP)	Side B (SWP)	Side C (SWP)
1893-16-16-16	1	1	1
1893-20-16-20	1-1/4	1	1-1/4
1893-20-20-20	1-1/4	1-1/4	1-1/4
1893-24-16-24	1-1/2	1	1-1/2
1893-24-20-24	1-1/2	1-1/4	1-1/2
1893-24-24-24	1-1/2	1-1/2	1-1/2
1893-32-20-32	2	1-1/4	2
1893-32-24-32	2	1-1/2	2
1893-32-32-32	2	2	2
1893-40-24-40	2-1/2	1-1/2	2-1/2
1893-40-32-40	2-1/2	2	2-1/2
1893-40-40-40	2-1/2	2-1/2	2-1/2
1893-48-24-48	3	1-1/2	3
1893-48-32-48	3	2	3
1893-48-40-48	3	2-1/2	3
1893-48-48-48	3	3	3
1893-64-32-64	4	2	4
1893-64-40-64	4	2-1/2	4
1893-64-48-64	4	3	4
1893-64-64-64	4	4	4



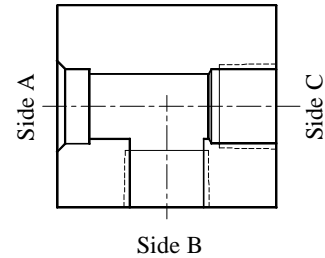
SWT / ORB / SWT

Part No.	Side A (SWT)	Side B (ORB)	Side C (SWT)
2475-12-12-12	0.75	#12 (1-1/16"-12)	0.75
2475-16-16-16	1.00	#16 (1-5/16"-12)	1.00
2475-20-20-20	1.25	#20 (1-5/8"-12)	1.25
2475-24-20-24	1.50	#20 (1-5/8"-12)	1.50
2475-24-24-24	1.50	#24 (1-7/8"-12)	1.50
2475-28-24-28	1.75	#24 (1-7/8"-12)	1.75
2475-32-20-32	2.00	#20 (1-5/8"-12)	2.00
2475-32-24-32	2.00	#24 (1-7/8"-12)	2.00
2475-32-32-32	2.00	#32 (2-1/2"-12)	2.00



SWT / ORB / ORB

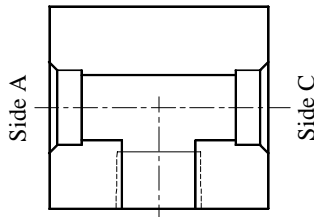
Part No.	Side A (SWT)	Side B (ORB)	Side C (ORB)
2476-12-12-12	0.75	#12 (1-1/16"-12)	#12 (1-1/16"-12)
2476-16-16-16	1.00	#16 (1-5/16"-12)	#16 (1-5/16"-12)
2476-20-20-20	1.25	#20 (1-5/8"-12)	#20 (1-5/8"-12)
2476-24-24-24	1.50	#24 (1-7/8"-12)	#24 (1-7/8"-12)
2476-28-24-24	1.75	#24 (1-7/8"-12)	#24 (1-7/8"-12)



SWT / NPT / NPT

Part No.	Side A (SWT)	Side B (NPT)	Side C (NPT)
2480-16-12-12	1.00	3/4"-14	3/4"-14
2480-20-16-16	1.25	1"-11.5	1"-11.5
2480-24-20-20	1.50	1-1/4"-11.5	1-1/4"-11.5
2480-32-24-24	2.00	1-1/2"-11.5	1-1/2"-11.5
2480-32-32-32	2.00	2"-11.5	2"-11.5

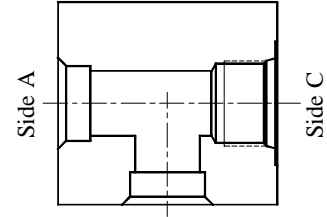
Weld-On & Threaded Tees



Side B

SWT / NPT / SWT

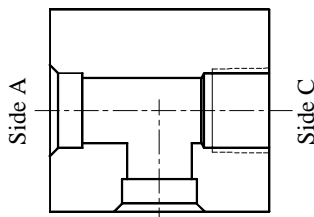
Part No.	Side A (SWT)	Side B (NPT)	Side C (SWT)
2478-16-12-16	1.00	3/4"-14	1.00
2478-20-16-20	1.25	1"-11.5	1.25
2478-24-20-24	1.50	1-1/4"-11.5	1.50
2478-32-24-32	2.00	1-1/2"-11.5	2.00
2478-32-32-32	2.00	2"-11.5	2.00



Side B

SWT / SWT / ORB

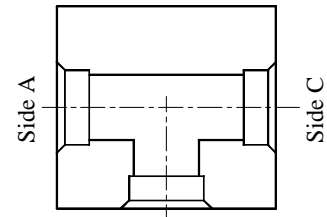
Part No.	Side A (SWT)	Side B (SWT)	Side C (ORB)
2473-16-16-12	1.00	1.00	#12 (1-1/16"-12)
2473-20-20-16	1.25	1.25	#16 (1-5/16"-12)
2473-24-24-20	1.50	1.50	#20 (1-5/8"-12)
2473-32-32-24	2.00	2.00	#24 (1-7/8"-12)
2473-32-32-32	2.00	2.00	#32 (2-1/2"-12)



Side B

SWT / SWT / NPT

Part No.	Side A (SWT)	Side B (SWT)	Side C (NPT)
2474-16-16-12	1.00	1.00	3/4"-14
2474-20-20-16	1.25	1.25	1"-11.5
2474-24-24-20	1.50	1.50	1-1/4"-11.5
2474-32-32-24	2.00	2.00	1-1/2"-11.5
2474-32-32-32	2.00	2.00	2"-11.5

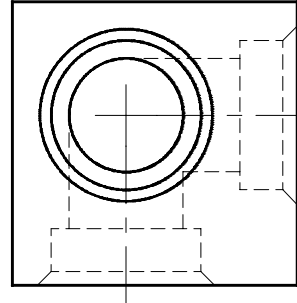
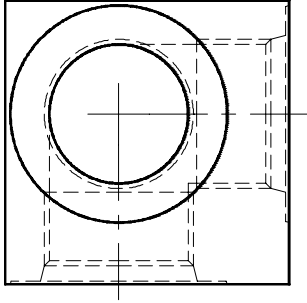


Side B

SWT / SWT / SWT

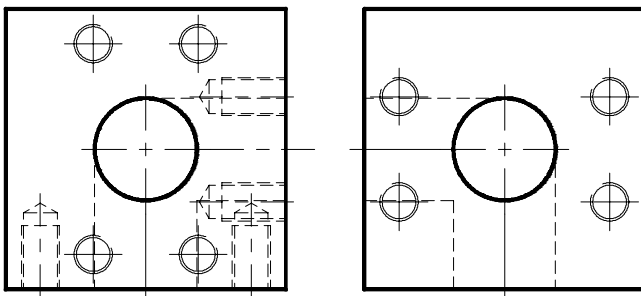
Part No.	Side A (SWT)	Side B (SWT)	Side C (SWT)
2472-12-12-12	0.75	0.75	0.75
2472-16-16-16	1.00	1.00	1.00
2472-20-20-20	1.25	1.25	1.25
2472-24-24-24	1.50	1.50	1.50
2472-28-28-28	1.75	1.75	1.75
2472-32-32-32	2.00	2.00	2.00

Corner Tees

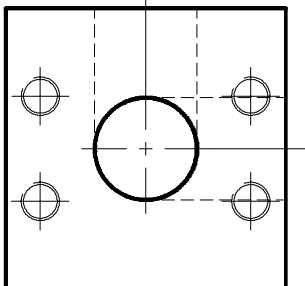


Part No.	ORB ports on three sides
3409-08-08-08	#8 (3/4"-16)
3409-12-12-12	#12 (1-1/16"-12)
3409-16-16-16	#16 (1-5/16"-12)
3409-20-20-20	#20 (1-5/8"-12)
3409-24-24-24	#24 (1-7/8"-12)
3409-32-32-32	#32 (2-1/2"-12)

Part No.	Socket Weld Pipe on three sides
3410-08-08-08	1/2"
3410-12-12-12	3/4"
3410-16-16-16	1"
3410-20-20-20	1-1/4"
3410-24-24-24	1-1/2"
3410-32-32-32	2"



Part No.	Code 61 Companion on three sides
3411-12-12-12	3/4"
3411-16-16-16	1"
3411-20-20-20	1-1/4"
3411-24-24-24	1-1/2"
3411-32-32-32	2"



Part No.	Code 62 Companion on three sides
3412-12-12-12	3/4"
3412-16-16-16	1"
3412-20-20-20	1-1/4"
3412-24-24-24	1-1/2"
3412-32-32-32	2"